



NITECORE®

NITECORE®

SYSMAX CORP.

www.nitecore.com

SYSMAX Innovations Co., Ltd.

24/F, TCL Plaza, No. 18 Haizhou Road, Haizhu District,
Guangzhou, 510335, Guangdong, China
Tel: +86 20 83862000 Fax: +86 20 83882723
E-mail: info@nitecore.com

PRODUCT CATALOG

KEEP INNOVATING

CONTENTS

Scenarios	2
About NITECORE	4
Awards	6
Brand Image	8
Knowledge	10
Patent	15
Lighting	16
— Tiny Monster Series	18
— Precise Series	20
— Smart Ring Tactical Series	24
— Chameleon Series	25
— Rechargeable Series	26
— Weapon Light Series	27
— Multitask Hybrid Series	28
— Multi-Task Series	32
— Explorer Series	34
— T Series	36
— NU Series	40
— UT Series	44
— Headlamp Series	46
— Lantern Series	49
— Bike Light Series	50
— GEM Series	50
Power Solution	52
— Portable Power	54
— Charger	60
Camera Cleaning Solutions	66
Photo Accessories	70
Accessories	80
Carry Gear	88
Specifications	94

KEEP INNOVATING

20211214

► PHOTO CREDITS

Frank
Protechteus
Lazarev Tactical
Stanislavpetera & hard_task_photo
Vrg Fotografia
Will Godward
Lee McGrath
Tactical Two
José Miguel Martínez
Alexander Morris
Sirio Sechi
Darren White
Kristian Bjerre
Kirk Meyer
Koen van der Jagt
Rigor Mor
Vittorio Crobu
Saboter
Xiaoyu
Pablofurius
Gaoli
Zhujinbin
Paul Chong

NITECORE®



WHEN THERE IS DARKNESS THERE IS A NITECORE LIGHT

NITECORE LED lights are standard equipment for military and law enforcement in various countries, as well as professional gear favored by outdoor enthusiasts around the world. This proves NITECORE to be the ideal choice for outdoor adventures, law enforcement, trail running, industrial lighting and many other fields.



Hiking/Trekking

Generally, lights for hiking not only require high output but also light weight, long duration and reliability. For team leaders, high output and far-reaching spotlights help them to see the path ahead, and a red caution light makes it easier for their team members to find and follow them.

Recommended models :
HA23, NU32, NU25, NU20



Running

For long distance running, runners may prefer a lightweight headlamp with flood light and long runtime. High output and red caution light are required when necessary. For those who enjoy leisurely urban night running, a high performance headlamp ensures their safety in running.

Recommended models :
UT27, UT32, NU17, NU20, NU25, NU32, HA23



Camping

For camping, a lightweight and portable lantern with a loop or magnetic base may be the most convenient to set hands free. Besides high output, it also requires soft beam with high colour rendering index, long duration and more.

Recommended models :
NU25, LA10, LA10 CRI, LR12, LR30, LR60



Climbing

Considering the harsh environment on high altitude, a headlamp with high intensity, long runtime and grand throw is essential. For freezing environments, low temperature resistance is required to maintain stable performance of lights. Hands-free and lightweight products are more popular.

Recommended models :
HC33, HC60 V2, HC65 V2



Caving

Due to the dangerous and low-light environment in cave, high output lights are required for caving. Since there is water in cave and the temperature is low, low temperature resistance and waterproofness are necessary. Ruggedness are also paramount.

Recommended models :
HU60, HC33, HC60 V2, HC65 V2



Search & Rescue

For search and rescue, a lighting tool should preferably have blinding lumens, superb beam distance as well as long runtime. Qualities like portability, ruggedness and light weight are also a plus.

Recommended models :
TM20K, TM39, TM39 Lite, TM28, P30i, R40 V2, HC33



Tactical

As a simple and intuitive UI is most important in tactical lights, Strobe Ready™ definitely meets the need. Besides, it requires high output and tactical defense function. Using with bezel, tactical ring, gun mount and remote switch to enhance the tactical function overall.

Recommended models :
P20iX, MH12S, P20 V2, P20UV V2, NPL20, NPL30, SRT7GT, CI7, TM9K TAC



Law Enforcement

For law enforcement applications, the lighting tools should have high output, long runtime and direct access to strobe. This kind of lighting tool should be highly reliable in resisting dust, water and shocks, and should be tough enough to confront contingencies.

Recommended models :
P20iX, MH12S, P20 V2, P20UV V2, NPL20, MT1A, SRT7GT, R40 V2, TM9K TAC, NU05 LE, NU06 LE, NU05 MI, NU07 LE



Hunting

A hunting light should have high output with optimal beam distance to ensure long range visibility. Light weight, compatibility with shotguns, ability to absorb recoil are also required. Colored outputs are preferred to preserve users' night adapted vision, or to not startle the preys.

Recommended models :
P30i, NEW P30, MH25 V2



Industrial Workplace

Rechargeable lights are usually welcomed by industrial workers due to better cost performance. Hands-free capability, portability, an intuitive user interface are required to ensure convenience. For hazardous industries like mining or oil extraction, explosion-proof lights are mandatory.

Recommended models :
EF1, HA23-Ex, UT27, UT32, HC33, HC60 V2, HC65 V2, NU35, TM28, TM39, TM39 Lite



EDC

EDC(everyday carry) is designed to be carried with you everyday, thus it must be ultra-compact, lightweight, and always works when you need it. It does not require multiple choices of brightness level, whilst sufficient runtime and easy operation are necessary.

Recommended models :
E4K, MH12S, MH10S, T4K, TUP, TINi2, TIP2, TIKI, TIKI LE, TIKI GITD, TIKI UV, TIP SE, TUBE V2.0



Cycling

Lighting with capability to illuminate blind spot ahead or under foot is essential to ensure safety in cycling. Features like multiple modes for different riding conditions, easy to operate, install or remove, flexible charging options, compatibility with handlebars of various sizes also add up to a great bike light. A rear caution light is also necessary for maximum attention and safety.

Recommended models :
BR35, BR25



Fishing

Hands-free capability is paramount. Colored outputs are inconspicuous, especially blue light. Blue light will not alarm underwater wildlife, and is able to attract some fishes, activate fluorescence of the float, which is why it is well received by fisherman or fishing enthusiasts.

Recommended models :
SRT7GT, TUP



Diving

A flashlight for diving needs to be totally waterproof and reliable, with high output, sufficient duration and flexibility. It is better to have a lanyard in case of loss. Red output is a plus for it serves as a supplementary lighting underwater.

Recommended models :
DL20

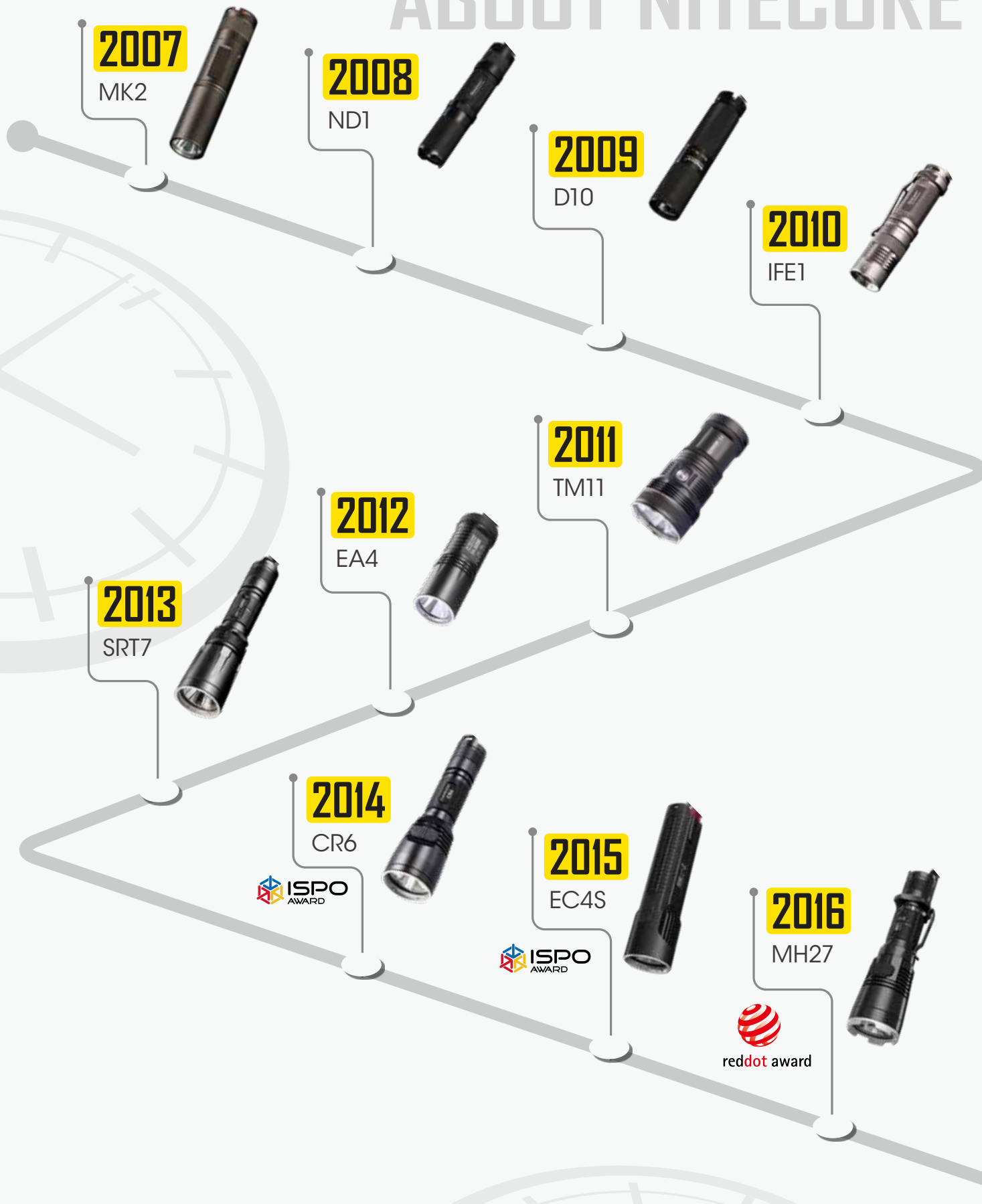


Photography

Full area coverage uniform lighting with color rendering capability is best for photography. Multiple output choices allowing for adjusting lighting according to ambient environment are also required. Portability, compatibility with tripods and colored outputs are a plus.

Recommended models :
GP3, LR30, TM28, SCL10

ABOUT NITECORE

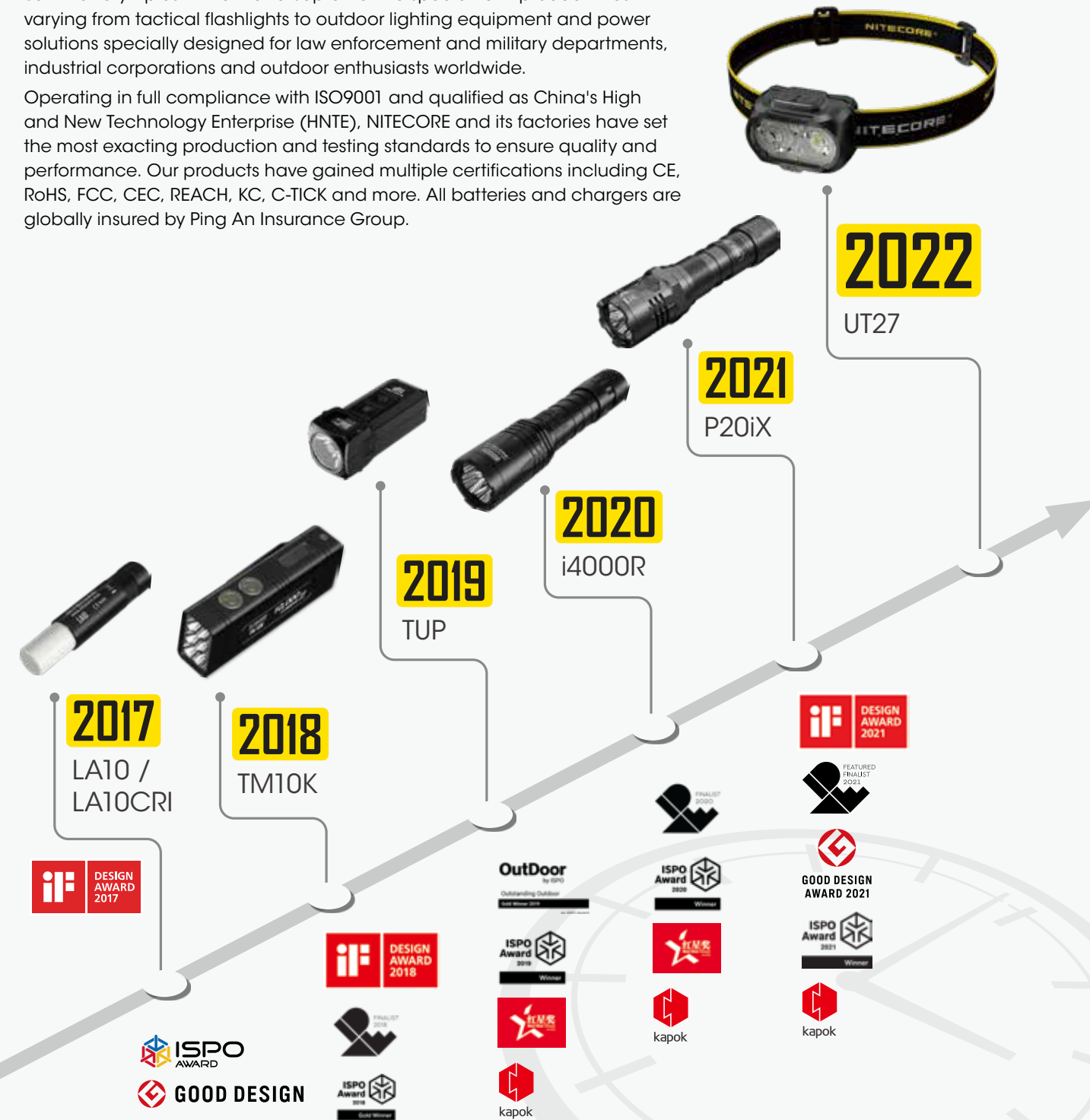


ABOUT NITECORE

Inspired by the notion to "Keep Innovating" with the industry-leading innovative power for 15 years, NITECORE is the first brand to achieve a grand-slam milestone in the industries of professional lighting and chargers to receive the German iF Design Award, Red Dot Design Award, the Japanese G-Mark (Good Design) and the American IDEA, as well as Gold Winners of the ISPO Award and Outstanding Outdoor globally recognized in the outdoor industry.

Our partners include Ultra-Trail Show organized by UTMB, HK100, Rio 2016 Summer Olympics in Brazil and Supreme. We specialize in product lines varying from tactical flashlights to outdoor lighting equipment and power solutions specially designed for law enforcement and military departments, industrial corporations and outdoor enthusiasts worldwide.

Operating in full compliance with ISO9001 and qualified as China's High and New Technology Enterprise (HNTe), NITECORE and its factories have set the most exacting production and testing standards to ensure quality and performance. Our products have gained multiple certifications including CE, RoHS, FCC, CEC, REACH, KC, C-TICK and more. All batteries and chargers are globally insured by Ping An Insurance Group.



PRODUCT AWARDS

Established in 2007, NITECORE has long been at the forefront of technological advancement in portable illumination. Through its tremendous research and development capacity, NITECORE has become the first brand in the professional lighting and illumination industry to receive all four grand international design prizes including the American IDEA, the German iF Design Award, Red Dot Design Award and the Japanese G-Mark (Good Design), in addition to the worldly famous ISPO Award in the outdoor industry. NITECORE products are internationally recognized in over 100 countries.

NPS200 Portable Outdoor Power Station	 	NES300 Portable Outdoor Power Station	 
NPS400 Portable Outdoor Power Station	 	TIN12 300 Lumens Dual-Core Intelligent Keychain Light	 
NPS600 Portable Outdoor Power Station	  	SCL10 2-in-1 Smart Camera Light & Power Bank	 
NWE30 Electronic Emergency Whistle	  	HUGO & NPBI E-focus Elite Headlamp Set	 
TIKI / TIKI LE 300 Lumens Mini Futuristic Keychain Lights	  	UT32 1100 Lumens Ultra Compact Coaxial Dual Output Headlamp	 
Z1700 Intelligent Battery System	 	HC65 & F4 Triple Output Headlamp & Power Bank	 
TINI SS 380 Lumens Mini Stainless Steel Keychain Light	 	LC10 Magnetic Outdoor USB Charger	 
LA10 / LA10 CRI Lipstick Camping Light	    	MH27 1000 Lumens Multi-output Dual Fuel Tactical Flashlight	 
SRT9 2150 Lumens Multi-output Unibody Diecast Flashlight	 	VCL10 All-in-One Vehicle Gadget	 

MEDIA RECOGNITION

 P20iX 2022 The Best Flashlights of 2022 (Most Versatile Flashlight)		 P10i 2021 The 10 Best Tactical Flashlights in 2021	
 TM10K 2021 The 16 Brightest Flashlights in 2021		 TIP SE 2021 10 Best Keychain Flashlights for EDC in 2021	
 TUP 2021 The 12 Best Keychain Flashlights For EDC in 2021		 NU25 2021 The Best Backpacking Headlamps of 2021 (All-Around Best)	
 NU25 2021 Best Headlamps of 2021 (Best Ultralight Headlamp)		 NU25 2021 The 10 Best Headlamps For Any Outdoor Activity in 2021	
 HC65 2021 The Top Headlamps From Our Tests (Universal)		 HUGO 2021 The Top Headlamps From Our Tests (The Multisport Helmet Light)	
 NU25 2019 2019 Editors' Choice		 HC65 2020 Outdoor 100 2020/2021 Outdoors Magic	
 NB10000 2021 The Best Ultralight Powerbank of 2021 The Best Backpacking Electronics of 2021		 NB10000 2021 The 15 Best Portable Chargers & Power Banks for 2021 / The 20 Best Carbon Fiber Essentials for Everyday Carry	
 NTP31 2021 The 12 Best Tactical Pens for EDC in 2021		 NTP31 2021 Best Tactical Pens to EDC in 2021	

GLOBAL PRESENCE

NITECORE has played an essential role in various organizations around the globe and has made great contributions to the outdoor and tactical industries. By now we are the active members of the following organizations:

	The Portable Lights American Trade Organization (PLATO)		Outdoor Industry Association (OIA)
	National Shooting Sports Foundation (NSSF)		Provincial Excellent Enterprise of Guangdong
	High and New Technology Enterprise (HNTE)		

MAGAZINE

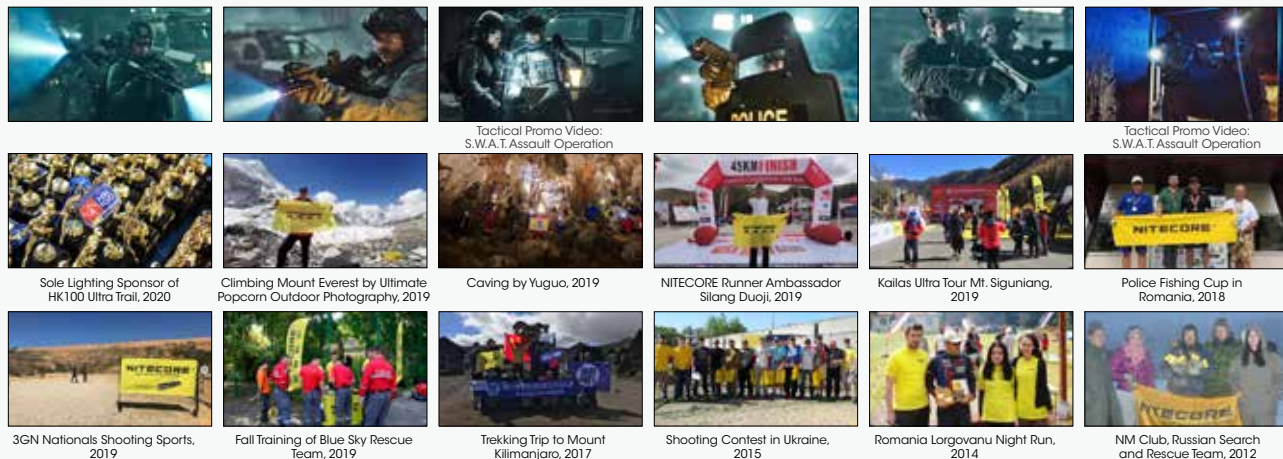
Media and Press is also an important tool for us to introduce the NITECORE brand to users worldwide.



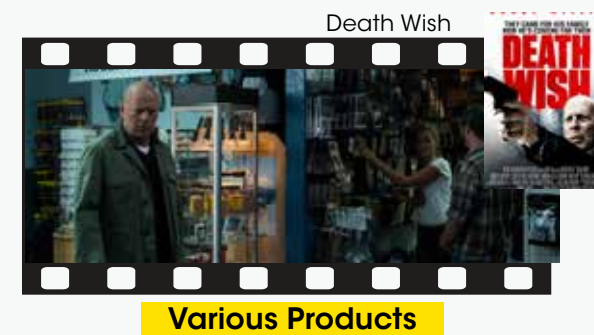
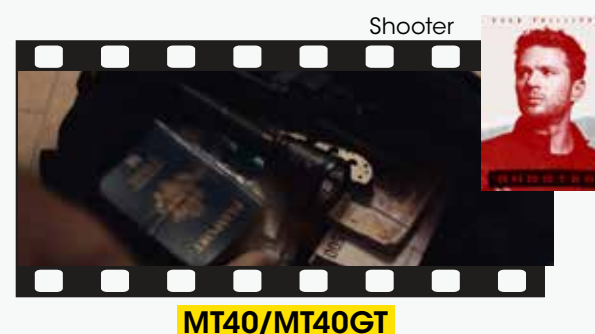
Svět outdooru	Sailing
Strelecka Revue	Rifle Firepower
SAM	Tir Mag
Myslivost	Jours de Chasse
Special Weapons	Planete Chasse
Outside Magazine	Chasseur Sanglier
WAPENMAGAZINE	Le Chasseur Francais

SPONSORED EVENTS

We have been internationally engaged in various sponsored events as a proactive approach to our corporate social responsibility. In association with some of our long-time outdoor, industrial and tactical partners, NITECORE products have been shown in over 100 activities and events around the world.



ON-SCREEN MOMENTS



Note: The screenshots and posters are for reference only. The copyright belongs to their respective production companies.

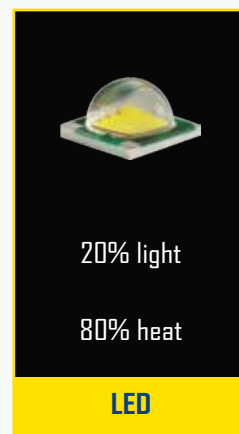
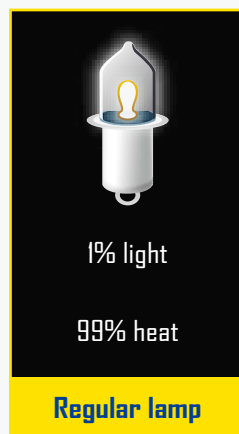


WHAT IS AN LED ?

LED is an acronym for Light Emitting Diode – a special type of semiconductor that was initially used to replace standard lamps in early electronic equipment, later progressing to consumer electronics in the form of VCR and calculator displays. With the advance of technology, LED can be used as a light source with a general life expectancy of 50,000 hours or even 100,000 hours. In addition, LED features the advantages of energy saving and environmental protection, small size and long lifespan, and can be applied in harsh environments.

NITECORE'S PROPRIETARY LED TECHNOLOGY

NITECORE's highly efficient, ultra reliable proprietary LED drive circuit plays a crucial role in efficiently transferring battery power to the LED. As a result, all NITECORE products have exceptional output and long runtimes in comparison to competing products. While the majority of LED-based flashlight/personal lighting products on the market today suffer from continuously declining output, NITECORE products are able to maintain constant high output until battery exhaustion.



ADVANCED CIRCUITRY

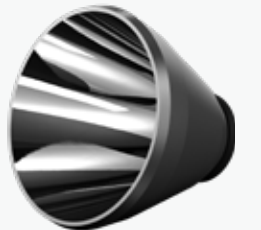
NITECORE's proprietary regulation circuit is an essential component in every NITECORE flashlight. The circuit's unique power source management system delivers constant current to the LED regardless of battery condition/chemistry, resulting in continuous, unwavering light output for end users. The circuit's efficiency and reliability is further enhanced by carefully engineered electronic components such as gold or silver plated contact points. Moreover, every NITECORE flashlight features an integrated microcontroller unit which works in tandem with the regulation circuit to offer an intuitive and versatile user-interface.

An Led drive/regulation circuit is crucial in improving the efficiency of the 'power to light' conversion process, allowing for longer runtimes and more stable operation using various battery chemistries. NITECORE's highly reliable and compact drive circuit is the reason why NITECORE flashlights run longer and shine brighter than the competition.



LENS AND REFLECTORS

With many years of experience in flashlight optical design, NITECORE's custom-engineered high-efficiency alloy reflectors ensure every flashlight emit a balanced beam profile of both flood and throw with minimal loss of light. All NITECORE reflectors are protected by AR-coated, anti-scratch mineral glass lenses.



PRECISION DIGITAL OPTICS TECHNOLOGY

PDOT utilizes digital simulation and precise point-to-point curved reflecting methods to optimize reflector performance. This ensures a more consistent, uniform and far-reaching beams capable of illuminating targets at distance.



DIE-CASTING

NITECORE is the first manufacturer to incorporate die casting into the making of a flashlight. This manufacturing process gives a flashlight a significant reduction in weight and size, and an increase in solidity and heat dissipation. Die-cast flashlights are extremely lightweight, compact and robust. Take the EC4 as an example, it is 37% smaller and 30% lighter than products of similar functionality and yet has 200% the strength of an ordinary CNC machined rival. By employing new techniques/technologies, NITECORE has always been innovating to offer significant gains in both ruggedness and performance.

BILLET ALUMINUM BODY

Most of the NITECORE flashlights are constructed from lightweight, high strength aerospace grade aluminum alloy. Additionally, the majority of NITECORE models are CNC machined from a solid aluminum bar. This manufacturing process gives NITECORE flashlights their superior impact resistance. Many lights are able to withstand being rolled over by car or dropped from several meters onto a hard surface with no performance loss (not recommended as doing so may void warranty). Compared to other similar tubular aluminum flashlights, NITECORE flashlights offer significant strengths in both rigidity and performance. Furthermore, most of the NITECORE models are treated with a military-spec HAIII hard anodized finish, making the flashlight surface as tough as a diamond, thus protecting it from scratches, abrasions and corrosion.



COLOR RENDERING INDEX (CRI)

The Color Rendering Index (CRI) is a scale from 0 to 100 percent indicating how a light source makes the color of an object appear to human eyes, and how well subtle variations in color shades are revealed. Light sources with a high CRI are more likely to reveal the original colors of the object, thus becoming more desirable in the market since they can reduce eye strain and give a vibrant view.

NITECORE Models with High CRI Light: LR30, LR60, TIP CRI, TIKI, TIKI GITD, TIKI GITD BLUE, NU17, NU25, NU32, NU35, HC65 V2, HC65M V2, CU10



NEUTRAL WHITE & WARM WHITE

LED color temperatures can be divided into cool white (about 5700-6500K), neutral white (about 4000-5000K) and warm white (about 3000-3500K). Neutral white lighting strikes the perfect balance: it has high CRI ability and reduces eye strain, making it extremely easy for the users to see every detail of the object. Neutral white's relatively low color temperature and long wavelength allow it to further penetrate rainy and foggy weather, and its high luminous efficiency also saves battery power. That's why harsh outdoor situations require neutral white lights.

NITECORE Neutral White Models: HC60W V2
NITECORE Warm White Models: UT27, UT32



ULTRAVIOLET & INFRARED

The UV light has shorter wavelengths than visible light, and is also known as black light. Ultraviolet LED flashlights are useful in many applications, including identifying forged documents, tracing marked bills, leakage/grease inspection, sanitary check, hunting scorpions etc.

The IR light is with wavelengths longer than those of visible light. Extensive uses for military and civilian applications include target acquisition, surveillance, night vision, homing, and tracking.

NITECORE Ultraviolet Models: P20UV V2, P20i UV, CU6, SRT7GT, MH27UV, TUBE UV, THUMB LEO, GEM10UV
NITECORE Infrared Models: CI7, NU05 MI



STROBE READY™

In law enforcement, the strobe flashlight for self-defense is used on potential suspects who may present a danger but are not lethally armed. The strobe light is disorienting to the person it is aimed at which makes it difficult for them to concentrate. Also, they avert their eyes away from the strobing effect. This means it is easier for the police to subdue successfully and control the suspect.



STROBE READY™!
ULTIMATE ONE-HANDED OPERATION

2nd Generation STROBE READY™ Technology

- 1 Specially designed for tactical applications to enable a quick access to STROBE Mode (Patent No.: ZL201320545349.4)
- 2 Inset pedal design to avoid accidental activation (US Patent No.: 15/846299 US10237955B1)

The 2nd Generation STROBE READY™ Technology is specially designed by NITECORE for tactical applications to enable a quick access to STROBE Mode with the dual tail switches and the inset pedal design to avoid accidental activation.

NITECORE STROBE READY™ Models:
P10i, P20i, P20i UV, P10iX, P20iX, P10 V2, P20 V2, P20UV V2, CI7



ADVANCED RANDOMLY CHANGING STROBE MODE

The randomly changing frequencies available in the STROBE Mode of latest NITECORE models can cause stronger dizzying effects due to the inadaptability of the naked eyes.

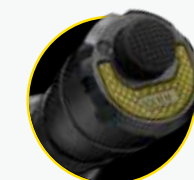
NITECORE Models with Randomly Changing STROBE Mode:
TM20K, P10i, P20i, P20i UV, P10iX, P20iX, CI7, MH10 V2, MH12 V2, MH25 V2, MH10S, MH12S, MH25S, NPL20, NPL30, HC35, E4K



TURBOREADY™

NITECORE aims to lead a trend of new tactics with the TurboReady™ technology to enable an instant dazzle strike with a blazing tactical output, in order to produce an abrupt disturbance to your adversary during the day or at night.

NITECORE TurboReady™ Models: TM9K TAC, TM20K



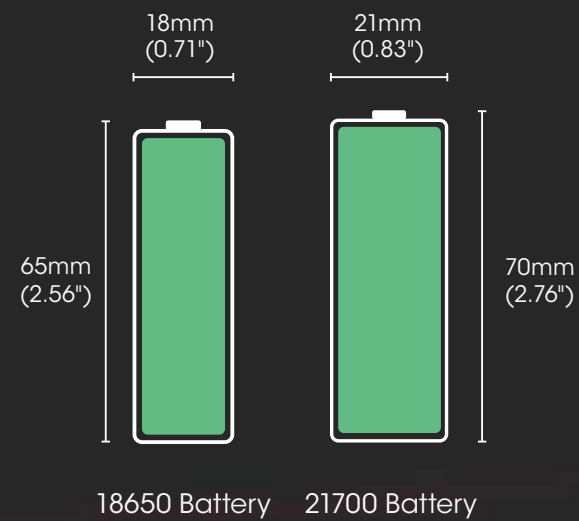
TURBOREADY™
Mode Button

NEXT GENERATION

21700 LI-ION BATTERIES

With an upgraded performance in a similar size featuring long lifespan, high energy density and powerful performance, 21700 Li-ion batteries were first introduced in the electric car industry and are considered to be the future of cylindrical batteries. With the 18650/CR123 battery magazine, the latest NITECORE 21700 flashlight models have full compatibility of battery sizes and are recommended to be powered by 1 × 21700 battery to gain an extended long runtime while compatible with 1×18650 battery or 2 × CR123/RCR123 batteries.

NITECORE 21700 Flashlight Models:
NEW P30, MH10 V2, MH12 V2, MH25 V2, MH10S,
MH12S, MH25S, HC35, E4K, LR60, BR25



18650/CR123 Battery Magazine
For 18650 / CR123 / RCR123 Batteries

REVOLUTIONARY 21700 I SERIES BATTERY

As a patent product developed by NITECORE, the 21700 i Series Battery is a proprietary 21700 rechargeable Li-ion battery featuring dual way output with positive and negative polarities at both ends and a high energy density. It enables a highly efficient output by minimizing the loss of power due to internal resistance while compatible with modular extensions of intelligent communications and controlling systems.

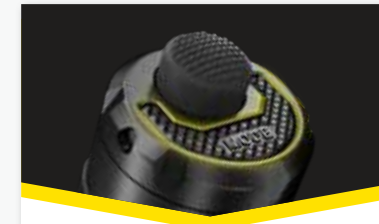
(Patent No. ZL201820118916.0, US Patent Pending)

NITECORE i-Generation 21700 Flashlight Models:
P10i, P20i, P20i UV, P10iX, P20iX, P30i



PATENT

With advanced technologies and technical personnel, NITECORE has been keeping innovating for over the years and has harvested over one hundred invention patents and utility model patents.



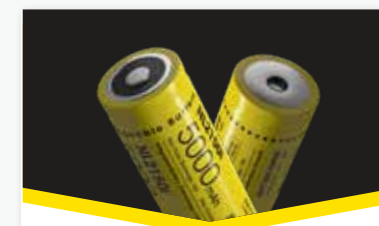
2nd Generation STROBE
READY™ Technology



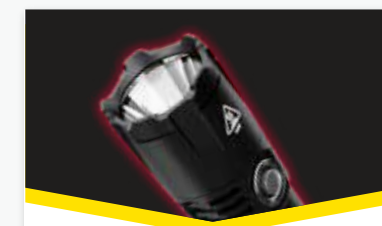
The First Coaxial Dual
Output Headlamp Design
in the Industry



Spotlight / Floodlight
Adjustable E-focus Design



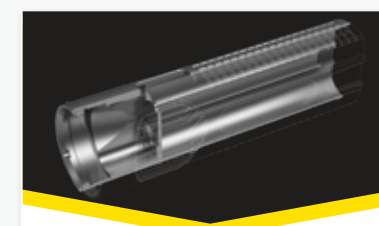
21700 i Series Battery



Advanced Temperature
Regulation (ATR) Technology



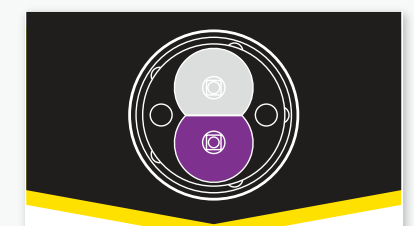
Innovative Active Dimming
Technology (ADT)



Innovative Unique
Integrated Technology (UIT)



The industry's first flashlight
utilizing inductive charging
technology



Innovative multi-output
flashlight series



Chargers with Automatic
Current Selection



Multifunctional All-in-One
Vehicle Gadget



ALL-IN-ONE highly compatible
and intelligent charger series



TM Tiny Monster Series

All of our groundbreaking Tiny Monster models have thoroughly changed the way people think about portable lights, and more importantly, what they actually carry and use. Created for search and rescue as well as outdoor adventures, our Tiny Monster series is now employed in countless professional applications where bright lighting is needed.

► TM20K

TURBO/READY™

20000
Lumens

290
Meters



- 19 × CREE XP-L HD LEDs
- Built-in Li-ion Battery

TurboReady™ Ultra High Performance Searchlight



Self
Defense



Search &
Rescue



► TM9K TAC

TURBO/READY™



9800
Lumens

280
Meters



- 9 × CREE XP-L2 HD LEDs
- Built-in Li-ion Battery

TurboReady™ Ultra Compact Tactical Flashlight



Law
Enforcement



Search &
Rescue



Self
Defense



► TM10K



10000
Lumens

288
Meters

- 6 × CREE XHP35 HD LEDs
- Built-in Li-ion Battery

Compact and Intelligent Sharp Light



Multifunctional OLED Real-time Display



► TM39



5200
Lumens

1500
Meters

- LUMINUS SBT-90 GEN2 LED
- NBP68 HD Battery Pack

Ultra High Performance Superior Searchlight



► TM39 Lite

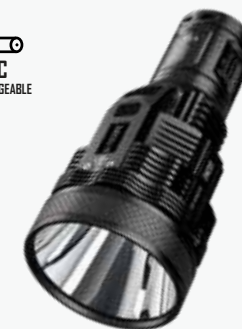


5200
Lumens

1500
Meters

- LUMINUS SBT-90 GEN2 LED
- 4 × 18650

Ultra High Performance Superior Searchlight



► TM06S

4000
Lumens

359
Meters

- 4 × CREE XM-L2 U3 LEDs
- 4 × 18650

Palmtop Monster Rechargeable Searchlight



► TM28



6000
Lumens

655
Meters

- 4 × CREE XHP35 HI LEDs
- 4 × 18650

Staggering Performance Rechargeable Searchlight



P Precise Series

NITECORE Precise Series flashlights are highly innovative illumination tools purpose-designed for law enforcement, hunting and tactical applications. With blazingly bright output in TURBO/STROBE mode, exceptionally long runtimes in low mode and unique gun-mounting functionality, the Precise series flashlights are the ultimate lighting tools for increased tactical effectiveness.

P20iX

STROBE READY™
ULTIMATE ONE-HANDED OPERATION

4000
Lumens

221
Meters



- 4 x CREE XP-L2 V6 LEDs
- 1 x 21700 i Series Battery
- 2 x CR123/RCR123

**Xtreme Performance i-Generation
21700 Tactical Flashlight**



Law
Enforcement



Search &
Rescue



Self
Defense

Features

- + STROBE Mode uses randomly changing frequencies for stronger dizzying effects
- + Tactical Mode and Daily Mode available
- + The power indicator indicates the remaining battery power

Strike bezel uses high strength
silicon nitride ceramics



Compatible with various i Series modular extensions



RSW2i

USB-C Remote Switch



TSL10i

Tail Cap Signal Light



F21i

Fast Charging Power System



STROBE READY™
ULTIMATE ONE-HANDED OPERATION

The Strobe Ready™ is designed with the lever principle, providing a maximum ease of use with glove.



NTH20

P20i



1800
Lumens

343
Meters

- Luminus SST-40-W LED
- 1 x 21700 i Series Battery
- 2 x CR123/RCR123

i-Generation 21700 Tactical Flashlight

P20i UV



1800
Lumens

337
Meters

320
mW

365
nm

- Luminus SST-40-W LED + 4 x UV LEDs
- 1 x 21700 i Series Battery
- 2 x CR123/RCR123

**i-Generation 21700 White +
UV Dual Output Flashlight**



NTH20

P20 V2

1100
Lumens

222
Meters

- CREE XP-L2 V6 LED
- 1 x 18650
- 2 x CR123/RCR123

**STROBE READY™ High Performance
Tactical Flashlight**

P20UV V2

1000
Lumens

164
Meters

320
mW

365
nm

- CREE XP-L2 V6 LED + 4 x UV LEDs
- 1 x 18650
- 2 x CR123/RCR123

**STROBE READY™ White + UV Dual
Output Tactical Flashlight**

STROBE READY™! ULTIMATE ONE-HANDED OPERATION

The Strobe Ready™ is designed with the lever principle, providing a maximum ease of use with glove.



► P10iX



4000
Lumens

158
Meters

- 4 × CREE XP-L2 V6 LEDs
- 1 × 21700 i Series Battery
- 2 × CR123/RCR123



**Xtreme Performance i-Generation
21700 Ultra Compact Flashlight**

► P10i



1800
Lumens

290
Meters

- Luminus SST-40-W LED
- 1 × 21700 i Series Battery
- 2 × CR123/RCR123



**i-Generation 21700 Ultra
Compact Tactical Flashlight**

► P10 V2

1100
Lumens

201
Meters

- CREE XP-L2 V6 LED
- 1 × 18650
- 2 × CR123/RCR123



**STROBE READY™ Ultra
Compact Tactical Flashlight**



► P30i



2000
Lumens

1000
Meters

- CREE XHP35 HI LED
- 1 × 21700 i Series Battery
- 2 × CR123/RCR123



**i-Generation 21700 High
Output Searchlight**



P30i KIT

► NEW P30

1000
Lumens

618
Meters

- CREE XP-L HI V3 LED
- 1 × 21700
- 1 × 18650
- 2 × CR123/RCR123



Next Generation 21700 Searchlight



NEW P30 KIT

SRT Smart Ring Tactical Series

NITECORE's SRT series is the world's first line of flashlights to feature third generation SSR (Smart Selector Ring) technology, offering infinitely variable brightness adjustment and unprecedented ease of use. The SSR interface allows users to select modes and brightness levels by simply rotating a smooth magnetic ring. This industry leading design is both user-friendly and extremely durable, making it ideal for law enforcement and tactical applications.

SRT7GT

1000 Lumens
450 Meters

- CREE XP-L HI V3 LED
- 1 x 18650
- 2 x CR123/RCR123

Multi-output SmartRing Tactical Flashlight



Features

The 3rd Generation Smart Selector Ring combined with a tail switch

Infinitely Variable White Light
Red + Blue + Green + UV + 3 Special Modes

Anti-impact reverse polarity protection mechanism for shooting sports

The power indicator indicates the remaining battery power



Red Light Low light tactical application, protects night vision



Blue Light Blood tracking and oil stain inspection



Green Light Hunting, observing, or checking intricate documents



Ultraviolet Mining activities, medical investigation, jewel/document/currency inspection

C Chameleon Series

The Chameleon Series is yet another unique and innovative offering from NITECORE. Featuring the white output and another choice of Red, Green, Blue, Ultraviolet or Infrared, Chameleon flashlights offer incredible versatility for a wide range of applications. The latest model has an easy and unique switching mechanism combined with our patented STROBE READY™ Technology.

CI7

STROBE READY™
ULTIMATE ONE-HANDED OPERATION

2500 Lumens

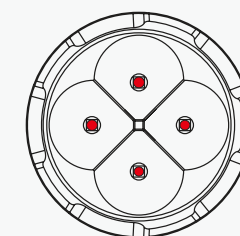
279 Meters

7000 mW

940 nm

- 4 x CREE XP-G3 S3 LEDs + 4 x Luminus SST-10-IR LEDs
- 1 x 18650
- 2 x CR123/RCR123

STROBE READY™ Dual Output Tactical IR Flashlight



Night Vision Devices Compatible

Features

2nd Generation Inset Pedal Design with dual tail switches

The power indicator indicates the remaining battery power

NTR10 Tactical Ring Pro compatible

Easy dual beam switching mechanism between IR and white beams

The IR beam of the CI7 utilizes **4 x SST-10-IR LEDs** (wavelength 940nm) available with 3 output levels.



LOW
1000mW



MID
3000mW



HIGH
7000mW

CU6

440 Lumens

190 Meters

3000 mW

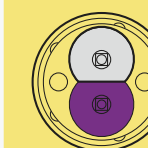
365 nm

- CREE XP-G2 R5 LED
- 1 x 18650
- 2 x CR123/RCR123

Multi-output Tactical UV Flashlight



A powerful 3000mW ultraviolet LED is controlled via a convenient side switch



Ultraviolet Light: Stimulates fluorescent material in the dark environments, making it ideal for authentication of documents and identifying evidence for crime scene investigations.

R Rechargeable Series

Rechargeable Series are aimed at your ultimate maneuver. The smart charging docks keep your flashlights always fully-powered for any abrupt cases. With power-boosted dedicated Li-ion batteries, the R Series flashlights are capable of emitting blinding blaze in no time, smashing up darkness and violence for your law enforcement and tactical tasks.

R40 V2



1000
Lumens

520
Meters

CREE XP-L HI V3 LED
1 x NL2150DW Battery

Features

- + Triple charging ways available
- + Dual side switches design
- + The power indicator indicates the remaining battery power



AC adapter and 12V/24V car adapter included



Wall mount cradle and desktop cradle included for inductive wireless charging

Inductive Wireless Charging Flashlight



Industrial workplace



Law Enforcement



Tactical

Industry-Leading
Wireless Charging
Technology



NPL Weapon Light Series

The Weapon Light Series is designed with a standard Picatinny Rail Mount, available for quick mounting and compatible with firearms with universal Picatinny Rails. The Anti-impact Reverse Polarity Protection Mechanism specially designed for shooting sports ensures its performance and stability.

NPL20

460
Lumens

76
Meters

CREE XP-G3 S3 LED
1 x CR123A



Universal Compact Weapon Light

NPL30

1200
Lumens

113
Meters

4 x CREE XP-G3 LEDs
2 x CR123A/RCR123

Features

Electronic reverse polarity protection

Ambidextrous activation dual switch design

High Performance Universal Weapon Light

STROBE Mode uses randomly changing frequencies for stronger dizzying effects



MH Multitask Hybrid Series

NITECORE Multitask Hybrid (MH) dual-fuel rechargeable flashlights are a new line of highly versatile and practical illumination tools designed for a multitude of users and applications. Featuring a high-precision long-range reflector, well-spaced brightness settings plus STROBE and SOS modes, the MH series is the ultimate lighting tools for hunting, trekking, camping, law enforcement, search and rescue.

MH12S



1800
Lumens

294
Meters

- Luminus SST-40-W LED
- 1 x 21700
- 1 x 18650
- 2 x CR123/RCR123

**Superior Performance 21700
Dual Fuel Compact Flashlight**



Search & Rescue



Tactical



Electronic reverse polarity protection

Features



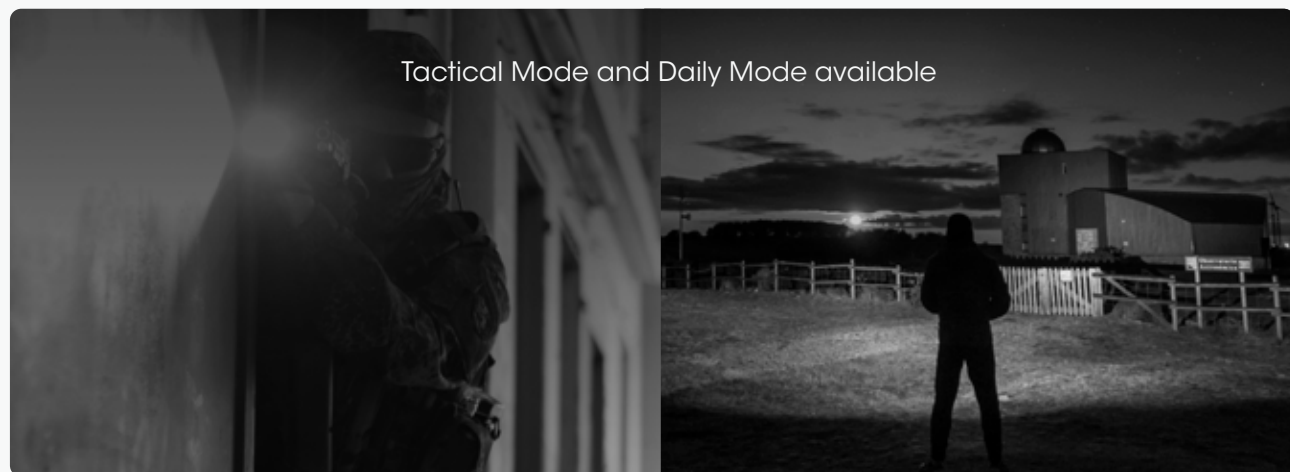
Combination of a tail switch and a side switch

NTR10 Tactical Ring
Pro compatible

STROBE Mode uses randomly changing frequencies for stronger dizzying effects



Tactical Mode and Daily Mode available



MH12 V2



1200
Lumens

202
Meters

- CREE XP-L2 V6 LED
- 1 x 21700
- 1 x 18650
- 2 x CR123/RCR123

**Next Generation 21700
Dual Fuel Tactical Flashlight**



The power indicator indicates the remaining battery power



NTR10 Tactical Ring
Pro compatible

MH10S



1800
Lumens

294
Meters

- Luminus SST-40-W LED
- 1 x 21700
- 1 x 18650
- 2 x CR123/RCR123

**Superior Performance 21700
Dual Fuel EDC Flashlight**



MH10 V2

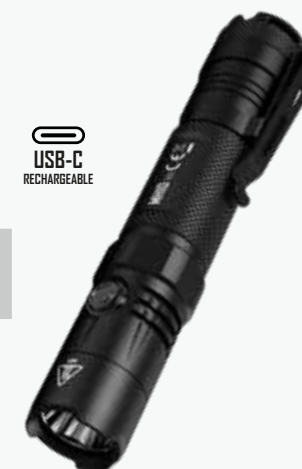


1200
Lumens

202
Meters

- CREE XP-L2 V6 LED
- 1 x 21700
- 1 x 18650
- 2 x CR123/RCR123

**Next Generation 21700
Dual Fuel EDC Flashlight**



► MH25S


1800
Lumens

504
Meters

- Luminus SST-40-W LED
- 1 × 21700
- 1 × 18650
- 2 × CR123/RCR123

**Superior Performance 21700
Dual Fuel Long Range Flashlight**


Camping

Hiking/
TrekkingLaw
EnforcementSearch &
Rescue

Features

Electronic reverse polarity protection

Combination of a tail switch
and a side switchNTR10 Tactical Ring
Pro compatibleTactical Mode and
Daily Mode availableSTROBE Mode uses randomly changing
frequencies for stronger dizzying effects**MH25S KIT**

► MH25 V2


1300
Lumens

475
Meters

- High Performance LED
- 1 × 21700
- 1 × 18650
- 2 × CR123/RCR123

**Next Generation 21700 Dual
Fuel Long Range Flashlight**

Features

- + Tactical Mode and Daily Mode available
- + STROBE Mode uses randomly changing frequencies for stronger dizzying effects
- + The power indicator indicates the remaining battery power

Combination of a tail switch
and a side switch**MH25 V2 KIT**

► MH23


1800
Lumens

294
Meters

- CREE XHP35 HD LED
- 1 × 18650
- 2 × CR123/RCR123

High Output Pocket Searchlight


► MH27


1000
Lumens

462
Meters

- CREE XP-L HI V3 LED
- 1 × 18650
- 2 × CR123/RCR123

**Multi-output Dual Fuel
Tactical Flashlight**

 Primary White Light
 Red + Blue + Green + 6 Special Modes

► MH27 UV


1000
Lumens

462
Meters

500
mW

365
nm

- CREE XP-L HI V3 LED
- 1 × 18650
- 2 × CR123/RCR123

**Multi-output Dual Fuel
Tactical UV Flashlight**

 Primary White Light
 Red + Blue + UV + 6 Special Modes


MT Multi-Task Series

Multi-Task flashlight series is a line of highly versatile and practical illumination tools designed for a multitude of users and environments. A sleek, robust body finely etched with extensive knurling and a perfect finish is a hallmark of this range, but even more important is the highly practical and usable user-interface which makes selecting modes a breeze. NITECORE MT series flashlights are your ultimate lighting tools for various environments.

► MT21C



1000
Lumens

184
Meters

- CREE XP-L HD V6 LED
- 1 x 18650
- 2 x CR123/RCR123

Features



The power indicator indicates the remaining battery power

90° adjustable head

Single side switch



Industrial workplace



EDC

Multifunctional 90° Adjustable Flashlight



► MT1A

180
Lumens

115
Meters

- Cree XP-G2 R5 LED
- 1 x AA

Ultra Compact AA Tactical Flashlight



► MT2A

345
Lumens

152
Meters

- Cree XP-G2 R5 LED
- 2 x AA

Ultra Compact 2AA Tactical Flashlight



► MT06MD

180
Lumens

58
Meters

- Nichia 219B LED
- 2 x AAA

Pocket Medical AAA Penlight



Medical



Features

High CRI Output (CRI≥90)
Photobiologically Safe (RG0)



Default low mode setting



► MT10C

920
Lumens

190
Meters

- CREE XP-L2 U2 LED
- 1 x IMR18350
- 1 x CR123/RCR123

Ultra Compact Tactical White + Red Flashlight



► MT10C ARC Rail Helmet Light Set

MT10C + LMA1



Explorer Series

Explorer Series flashlights are designed with outdoor enthusiasts in mind. Utilizing a highly tactile user interface with attractive appearance, these ultra-compact lights are ideal for hiking, camping, searching and caving, providing the avid outdoorsmen with unprecedented output performance and ultimate illumination experience.

E4K



4400
Lumens

211
Meters

- 4 x CREE XP-L2 V6 LEDs
- 1 x 21700
- 2 x CR123/RCR123

Next Generation 21700 Compact EDC Flashlight



Climbing



Industrial workplace



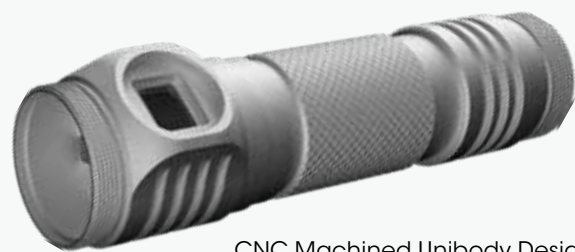
EDC

Features

2-stage side switch controls 5 brightness levels and 3 specials modes



Independently controlled quadruple LEDs



CNC Machined Unibody Design

EA41

1020
Lumens

335
Meters

- CREE XM-L2 U2 LED
- 4 x AA

High Performance 4AA Portable Searchlight



EC20

960
Lumens

222
Meters

- CREE XM-L2 U2 LED
- 1 x 18650
- 2 x CR123/RCR123

Ultra Compact EDC Flashlight



EC23

1800
Lumens

255
Meters

- CREE XHP35 HD E2 LED
- 1 x 18650
- 2 x CR123/RCR123

High Performance EDC Flashlight



T Series

T Series is a collection of mini keychain lights designed for everyday carry. Small yet powerful, each light comes with powerful features in an extremely mini package. With a built-in Li-ion battery and a Micro-USB / USB-C port, it offers flexible charging options and ultimate convenience of use, making it the best EDC gadget that you will carry every day.

T4K



4000 Lumens

209 Meters

- 4 x CREE XP-L2 V6 LEDs
- Built-in Li-ion Battery

Quad-Core Intelligent Keychain Light



EDC



Industrial workplace



Hiking/Trekking

Multifunctional OLED real-time display



Features



Two user modes available

Two lockout modes available



Half Lockout Mode

Full Lockout Mode



The TIKI Family



kapok



iF
DESIGN
AWARD
2021

TIKI / TIKI LE



Mini Futuristic Keychain Lights

	TIKI	TIKI GITD	TIKI GITD BLUE	TIKI LE	TIKI UV
Max Output	300 Lumens				1,000mW
Primary Emitter	OSRAM P8 LED				Luminus SST-10-UV LED
Auxiliary Emitters	High CRI White LED			Red LED	2 x High CRI White LEDs
	UV LED (500mW, 365nm)			Blue LED	
Built-in Li-ion Battery	✓	✓	✓	✓	✓
USB Rechargeability	✓	✓	✓	✓	✓
Glow in the Dark	×			×	×

TINI2



kapok

500 Lumens

89 Meters

- 2 x OSRAM P8 LEDs
- Built-in Li-ion Battery

Dual-Core Intelligent Keychain Light

Features

- + Advanced Power Cut-Off (APC) Technology
- + 2 user modes available
- + 2 lockout modes available



Dual Emitters



Multiple Colors Available



TINI2 Ti

Titanium Version



TINI2 SS

Stainless Steel Version



► TIP2

720
Lumens93
Meters

- 2 × CREE XP-G3 S3 LEDs
- Built-in Li-ion Battery

Dual-Core Magnetic
Keychain Light

► TIP SE

700
Lumens90
Meters

- 2 × OSRAM P8 LEDs
- Built-in Li-ion Battery

Dual-Core Metallic Keychain Light

Dual side switch design



Multiple Colors Available



Features

- + 2 user modes available
- + Power indicators beneath the switches indicate the remaining battery power



Dual Emitters



USB-C Rechargeable



► TUP

EVERYDAY
CARRY1000
Lumens180
Meters

- CREE XP-L HD V6 LED
- Built-in Li-ion Battery

Revolutionary Intelligent Pocket Light



Multiple Colors Available



Battery Level & Voltage

Brightness Level

User Mode

Runtime Remaining

► THUMB

85
Lumens26
Meters

- 2 × High Performance LEDs
- Built-in Li-ion Battery

Portable and Tilttable
Work Light

► THUMB LED

45
Lumens24
Meters500
mW365
nm

- 2 × High Performance LEDs
- Built-in Li-ion Battery

Portable and Tilttable Work Light
Law Enforcement Version

► TIP CRI

240
Lumens56
Meters

- NICHIA 219B LED
- Built-in Li-ion Battery

Multiple Colors Available



High CRI Metallic Keychain Light

► TUBE V2.0

55
Lumens25
Meters

- High Performance LED
- Built-in Li-ion Battery

Multiple Colors Available



Tiny USB Keychain Light

► TUBE UV

Ultraviolet Light Version



NU Series

NITECORE NU series are lightweight, lithium-powered illumination tools featuring uniform wide beams, high output main LEDs, lower output secondary colored LEDs and bodies crafted from durable PC materials. Purpose-designed for hiking, climbing, camping and general outdoor recreation, NITECORE headlamps set new standards in output, functionality, comfort and runtime.

► NU25



360
Lumens

81
Meters

- ☐ CREE XP-G2 S3 LED
- ☐ Built-in Li-ion Battery
- ☐ 28g (0.99oz)



Ultra Lightweight Triple Output Outdoor Headlamp



Features

Lightweight and breathable headband included with silicone sweat diverting strip



Primary White Light + High CRI White Light + Red Light



► NU32



550
Lumens

125
Meters

- ☐ CREE XP-G3 S3 LED
- ☐ Built-in Li-ion Battery
- ☐ 76.4g (2.69oz)

High Performance Triple Output Outdoor Headlamp

Primary White Light + High CRI White Light + Red Light



Features

Lightweight and breathable headband included with silicone sweat diverting strip



► NU35



460
Lumens

48
Meters

- ☐ CREE XP-G3 S3 LED
- ☐ Built-in Li-ion Battery + AAA x 3
- ☐ 59g (2.08oz)

Dual Power Hybrid Working Headlamp



► NU17

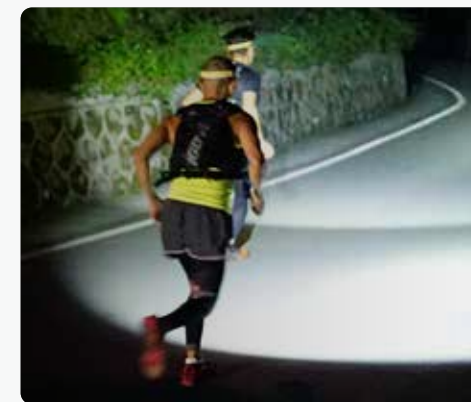


130
Lumens

43
Meters

- ☐ CREE XP-G2 S3 LED
- ☐ Built-in Li-ion Battery
- ☐ 33.5g (1.18oz)

Ultra Lightweight Triple Output Entry Level Headlamp



► NU20



360
Lumens

80
Meters

- ☐ CREE XP-G2 S3 LED
- ☐ Built-in Li-ion Battery
- ☐ 31g (1.09oz)

Ultra Lightweight Outdoor Headlamp



► NU10



160
Lumens

35
Meters

- ☐ 5 x High Performance LEDs
- ☐ Built-in Li-ion Battery
- ☐ 65g (2.29oz)

Ultra Lightweight Working Headlamp



SIGNAL LIGHT SERIES

► NU05



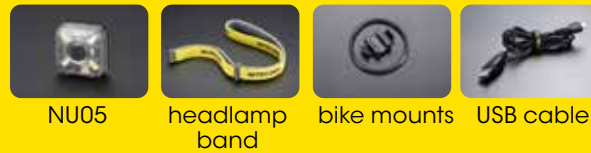
35
Lumens

- 4 x High Performance LEDs
- Built-in Li-ion Battery
- 10.4g (0.37oz)



Headlamp Mate

NU05 KIT



► NU05 LE



- 4 x High Performance LEDs
- Built-in Li-ion Battery
- 10.5g (0.37oz)



Multiple Flashing Modes Available



Mini Signal Light Law Enforcement Version



► NU05 MI



940
nm

- 4 x High Performance LEDs
- Built-in Li-ion Battery
- 10.5g (0.37oz)

Night Vision Devices Compatible

Mini Green + IR Signal Light Military Version



* The image is for reference only as the IR light is invisible to the naked eyes



► NU06 LE



- 4 x High Performance LEDs
- Built-in Li-ion Battery
- 15.8g (0.56oz)

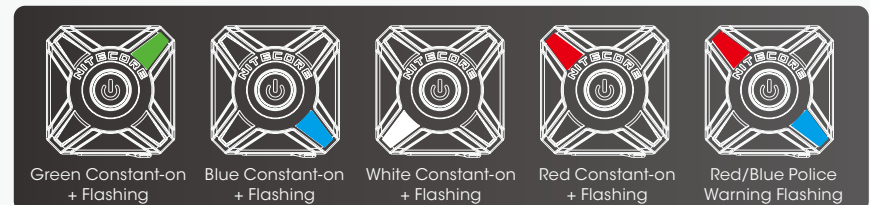


Mini Signal Light Law Enforcement Version

Multiple Mounting Ways



9 Modes Available with 4 Light Sources



► NU07 LE



- 5 x High Performance LEDs
- Built-in Li-ion Battery
- 24.5g (0.86oz)

Rechargeable Signal Light Law Enforcement Version



11 Modes Available with 5 Light Sources



UT Series

The UT Series is a brand new product line of NITECORE specially designed and optimized for trail runners in nighttime or in rain, snow or fog. Compared to marathons, trail races usually feature a longer distance, a steeper gradient and a longer duration with higher requirements on personal equipment, among which is the mandatory lighting gear.

► UT32



Primary Cool White Beam

Auxiliary Warm White Beam

1100
Lumens

80
Meters

920
Lumens

117
Meters

CREE XP-L2 V6 LED (5700K)

CREE XP-L V6 LED (3000K)

1 x 18650

2 x CR123/RCR123



Lightweight and breathable headband included with silicone sweat diverting strip

Ultra Compact Coaxial Dual Output Headlamp

Features

Quick beam switching mechanism



TrueVision Technology

Ultra smooth TrueVision flood beam

Ordinary Reflector



HEADLAMP THAT RUNS OVERNIGHT

► UT27



TURBO

520
Lumens

Spotlight

400
Lumens

128
Meters

CREE XP-G3 S3 LED (3000K)

Floodlight

200
Lumens

31
Meters

CREE XP-G3 S3 LED (5700K)

HLB1300 Battery Pack

3 x AAA

Overall Weight: 74g (2.61oz)



Ultra Lightweight Dual Beam Fusion Elite Headlamp



Spotlight + Floodlight Dual Beam Fusion Design



Dual Hybrid Power Source

HLB1300 Battery Pack

3 x AAA



Glow-in-the-dark Battery Compartment



H Headlamp Series

It is a series of multipurpose headlamps suits for night running, hiking, caving, outdoor adventure and more. Headlamps of this series are high-performance and extremely lightweight, featuring scorching output, long runtime and great reliability.

► HC60 V2



1200
Lumens

130
Meters

- OSRAM P9 LED
- 1 × 18650
- 2 × CR123/RCR123

USB-C Rechargeable High Performance Headlamp



Industrial workplace



Climbing



Search & Rescue



Hiking/Trekking

Features

- + Single switch design
- + The power indicator indicates the remaining battery power



► HC60W V2



Neutral White Version



► HC60M V2



High Performance Tactical Helmet Light



NVG Mount



► HC65 V2



1750
Lumens

165
Meters

- Luminus SST-40-W LED
- 1 × 18650
- 2 × CR123/RCR123

USB-C Rechargeable Triple Output Headlamp

Features

- + Single switch design
- + The power indicator indicates the remaining battery power



Primary White Light + High CRI White Light + Red Light



► HC65M V2



NVG Mount

► HA23

250
Lumens

56
Meters

- CREE XP-G2 S3 LED
- 2 × AA

Ultra Lightweight Outdoor Headlamp



Triple Output Tactical Helmet Light

► HUGO

Spotlight

1600
Lumens

162
Meters

Floodlight

1200
Lumens

37
Meters

4 × CREE XP-G3 S3 LEDs
USB Power Source

CREE XHP35 HD E2 LED

USB Powered E-Focus Elite Headlamp



Wristband Remote Included
for Wireless Control



Industry-leading Adjustable E-Focus Design

Optional Biking Accessories



► HC33



1800
Lumens

187
Meters

CREE XHP35 HD LED
1 × 18650
2 × CR123/RCR123



High Performance L-shaped Headlamp

► HC35



2700
Lumens

134
Meters

4 × CREE XP-G3 S3 LEDs
1 × 21700
1 × 18650
2 × CR123/RCR123



Next Generation 21700 High Performance L-shaped Headlamp

Lantern Series

NITECORE Lantern series products are professionally designed for camping. With a CRI rating ≥ 90, the lanterns emit a beam that is closer to natural daylight to avoid eye fatigue and reveal subtle details of objects. A single switch controls all brightness levels and modes, ideal for camping, excursion, working at night, night photography, everyday carry and so on.

► LA10



135
Lumens

10
Meters

CREE XP-G2 S3 LED
1 × AA

► LA10 CRI

85
Lumens

10
Meters

Nichia 219B LED
1 × AA



Award-Winning Lipstick Camping Lantern



► LR60

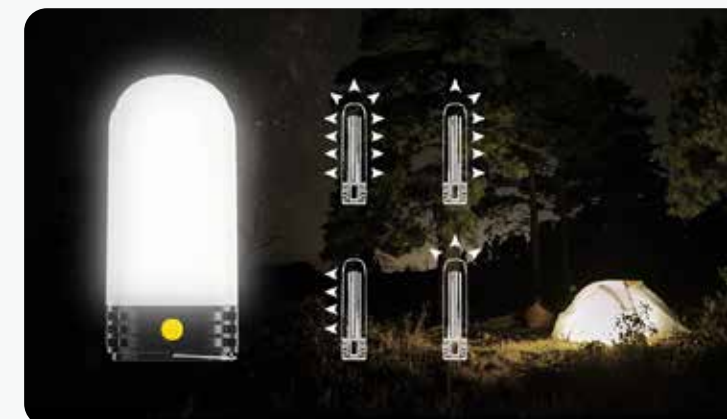


280
Lumens

28
Meters

9 × High CRI LEDs
1 or 2 × 21700/18650
2 or 4 × CR123/RCR123

Campbank Plus USB Camping Lantern + Power Bank



► LR30



205
Lumens

40
Meters

6 × High CRI LEDs + Red LED
1 × 18650
2 × CR123/RCR123



High CRI Dual Output Camping Lantern

Multiple Colors Available



► LR12



1000
Lumens

166
Meters

CREE XP-L HD V6 LED
1 × 18650
2 × CR123/RCR123



2-in-1 Design Lantern Flashlight

► BR35



1800 Lumens
176 Meters

- 2 × CREE XM-L2 U2 LEDs
- Built-in Li-ion Battery (6800mAh)

Rechargeable Dual Beam Bike Light



Remote switch included

Quick release mounting design



3 user modes available



CITY MODE



ROAD MODE



TRAIL MODE



Multifunctional OLED display

Triple side switch design



► BR25

1400 Lumens
163 Meters

- Luminus SST-40-W LED
- 1 × 21700
- 1 × 18650
- 2 × CR123/RCR123

High Performance Ultra Compact Bike Light



► GEM8

500 Lumens
39 Meters

- CREE XP-L HI V3 LED
- 1 × 18650
- 2 × CR123/RCR123

Gemstone Identification Light



► GEM10UV

3000 mW
365 nm

- UV LED
- 1 × 18650
- 2 × CR123/RCR123

Gemstone Identification UV Light



► HM01

320 Lumens
74 Meters

- Luminus SST-20-W LED
- 1 × CR123/RCR123

High Performance Tactical Helmet Light



3D PIVOTING SYSTEM

► CU10



220 Lumens
20 Meters

- High CRI COB Light Source
- USB Power

Split Type Backpack Light



► EF1

830 Lumens
270 Meters

- CREE XM-L2 U3 LED
- 1 × 18650

High Performance Explosion-Proof Flashlight



ATEX Credential:
II 2 G Ex d IIC T6 Gb



PCEC Credential:
Ex d IIC T5 Gb

► HA23-Ex

100 Lumens
37 Meters

- CREE XP-G LED
- 2 × AA

Explosion-Proof Ultra Lightweight AA Headlamp



PCEC Credential:
Ex ia IIC T4 Ga





► NPS200

Portable Outdoor Power Station

- Dimensions: 209mm × 156.3mm × 137.3mm (8.23" × 6.15" × 5.41")
- Weight: 3.35kg (7.39lbs)

NPS200 SPEC		
Cell	18650 Li-ion Batteries	
Capacity	196.56Wh (10.8V, 18.2Ah) (54600mAh)	
DC Input	14.4V-26V, up to 10A	160W max
AC Output	220V Version: 220V~0.68A 50Hz, Pure Sine Wave 110V Version: 110V~1.4A 60Hz, Pure Sine Wave	150W, 300W surge
Cig Lighter Output	12V=10A	Cig Lighter + DC Output: Total 120W max
DC Output	12V=10A	
USB Output	5V=2.4A	12W max each port
USB QC Output	5V=2.4A / 9V=2A	18W max
USB-C Output	5V=3A / 9V=3A / 12V=3A / 15V=3A / 20V=3A	60W max
Operating Temperature	-10~40°C (14~104°F)	



► NPS400

Portable Outdoor Power Station

- Dimensions: 244mm × 187.7mm × 157.3mm (9.61" × 7.39" × 6.19")
- Weight: 5.68kg (12.52lbs)

NPS400 SPEC		
Cell	18650 Li-ion Batteries	
Capacity	421Wh (10.8V, 39Ah) (117000mAh)	
DC Input	14.4V-26V, up to 10A	160W max
AC Output	220V Version: 220V~1.36A 50Hz, Pure Sine Wave 110V Version: 110V~2.75A 60Hz, Pure Sine Wave	300W, 600W surge
Cig Lighter Output	12V=10A	Cig Lighter + DC Output: Total 120W max
DC Output	12V=10A	
USB Output	5V=2.4A	12W max each port
USB QC Output	5V=2.4A / 9V=2A	18W max
USB-C Output	5V=3A / 9V=3A / 12V=3A / 15V=3A / 20V=3A	60W max
Operating Temperature	-10~40°C (14~104°F)	



► NPS600

Portable Outdoor Power Station

- Dimensions: 244mm × 187.7mm × 157.3mm (9.61" × 7.39" × 6.19")
- Weight: 5.83kg (12.85lbs)

NPS600 SPEC		
Cell	21700 Li-ion Batteries	
Capacity	594Wh (10.8V, 55Ah) (165000mAh)	
DC Input	14.4V-26V, up to 10A	160W max
AC Output	220V Version: 220V~1.36A 50Hz, Pure Sine Wave 110V Version: 110V~2.75A 60Hz, Pure Sine Wave	300W, 600W surge
Cig Lighter Output	12V=10A	Cig Lighter + DC Output: Total 120W max
DC Output	12V=10A	
USB Output	5V=2.4A	12W max each port
USB QC Output	5V=2.4A / 9V=2A	18W max
USB-C Output	5V=3A / 9V=3A / 12V=3A / 15V=3A / 20V=3A	60W max
Operating Temperature	-10~40°C (14~104°F)	



► NES300

Portable Outdoor Power Station

- Dimensions: 227mm × 211mm × 129mm (8.94" × 8.31" × 5.08")
- Weight: 3.4kg (7.5lbs)

NES300 SPEC		
Cell	18650 Li-ion Batteries	
Capacity	311Wh (10.8V, 28.8Ah) (86400mAh)	
DC Input	14.4V-26V, up to 10A	160W max
AC Output	220V Version: 220V~0.91A 50Hz, Pure Sine Wave 110V Version: 110V~1.81A 60Hz, Pure Sine Wave	200W, 400W surge
Cig Lighter Output	12V=10A	120W max
USB Output	5V=2.4A	12W max each port
USB-C Output	5V=3A / 9V=3A / 12V=3A / 15V=3A / 20V=3A	60W max
Operating Temperature	-10~40°C (14~104°F)	

► NES500

Portable Outdoor Power Station

- Dimensions: 262mm × 237mm × 154mm (10.31" × 9.33" × 6.06")
- Weight: 5.65kg (12.46lbs)

NES500 SPEC		
Cell	18650 Li-ion Batteries	
Capacity	518Wh (10.8V, 48Ah) (144000mAh)	
DC Input	14.4V-26V, up to 10A	160W max
AC Output	220V Version: 220V~2.27A 50Hz, Pure Sine Wave 110V Version: 110V~4.54A 60Hz, Pure Sine Wave	500W, 1000W surge
Cig Lighter Output	12V=10A	120W max
USB Output	5V=2.4A	12W max each port
USB-C Output	5V=3A / 9V=3A / 12V=3A / 15V=3A / 20V=3A	60W max
Operating Temperature	-10~40°C (14~104°F)	



► NES1200

Portable Outdoor Power Station

- Dimensions: 317mm × 214mm × 282.5mm (12.48" × 8.43" × 11.12")
- Weight: 10.65kg (23.48lbs)

NES1200 SPEC		
Cell	18650 Li-ion Batteries	
Capacity	1252.8Wh (21.6V, 58Ah) (348000mAh)	
DC Input	12V-36V, up to 10A	180W max
USB-C Input	5V=3A / 9V=3A / 12V=3A / 15V=3A / 20V=5A	100W max per port
AC Output	220V Version: 220V~6A 50Hz, Pure Sine Wave 110V Version: 110V~11A 60Hz, Pure Sine Wave	1200W, 2200W surge
Cig Lighter Output	12V=10A	120W max
USB-A Output	5V=3A / 9V=2A / 12V=2A / 20V=1.5A	30W max per port
USB-C Output	5V=3A / 9V=3A / 12V=3A / 15V=3A / 20V=5A	100W max per port
Operating Temperature	-10~40°C (14~104°F)	



► FSP100W

100W ETFE Waterproof Foldable Solar Panel



FSP100W SPEC	
Dimensions	Unfolded: 1,294mm × 606mm × 5mm (50.9" × 23.9" × 0.2") Folded: 385mm × 300mm × 45mm (15.2" × 11.8" × 1.8")
Weight	2.6kg
Panel Number	8
Cell Efficiency	≥ 23%
Operating Current	DC Output 5.6A
Operating Voltage	DC Output 18V
Total Output Power	100W (MAX)
Total Output Power	7.9*5.5mm

► FSP100

100W Foldable Solar Panel

FSP100 SPEC	
Dimensions	Unfolded: 58cm × 143cm × 2.5cm (22.8" × 56.3" × 1.0") Folded: 29cm × 34cm × 7cm (11.4" × 13.4" × 2.8")
Weight	2.1kg
Panel Number	8
Cell Efficiency	*24%
Operating Current	DC Output 5.4A
Operating Voltage	DC Output 18V (MAX)
Total Output Power	100W (MAX)
Output Ports	7.9*5.5mm, USB-A × 2, USB-C
USB-A Output	Total 5V=3.1A
USB-C Output	5V=3A / 9V=3A / 12V=3A / 15V=3A

► SPM10

Solar Power Meter

SPM10 SPEC	
Input Ports	DC, Anderson
Output Ports:	DC, USB-A, USB-C
INPUT1 / INPUT2:	9~24V 10A
DC Output:	9~24V 10A
USB-A Output:	5V=3A / 9V=2A / 12V=1.5A
USB-C Output:	5V=3A / 9V=2A / 12V=1.5A
Dimensions	75mm × 52.5mm × 26mm (2.95" × 2.07" × 1.02") (DC Output Cable Not Included)
Weight	97g (3.42oz)

► Extension Cable for Solar Panels



10m (33ft)

► Parallel Cable for Solar Panels

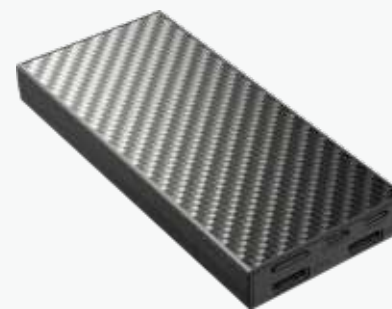


5m (16ft)



► NB20000

Ultra Lightweight Carbon Fiber Energy Brick



Weight: 324.5g (11.45oz)

NB20000 SPEC	
Cell	Li-ion
Capacity	20,000mAh 3.85V (77Wh)
Rated Energy	13,500mAh 5V (TYP 2A)
Input	USB-C (INPUT): 5V=2.4A / 9V=2A / 12V=1.5A (18W MAX) USB-C (IN): 5V=2.4A / 9V=3A / 12V=2.5A / 15V=2A / 20V=1.5A (30W MAX)
Output	USB-C (OUT 1): 5V=2.4A / 9V=3A / 12V=3A / 15V=3A / 20V=2.25A USB-A (OUT 2 / OUT 3): 5V=2.4A / 9V=2A / 12V=1.5A Multi Ports Output: 5V=3A (MAX)
Dimensions	136.3mm × 60mm × 21.4mm (5.37" × 2.36" × 0.84")

► NB10000

Ultra Lightweight Carbon Fiber Energy Brick



Weight: 150g (5.29oz)

NB10000 SPEC	
Cell	Li-ion
Capacity	10,000mAh 3.85V (38.5Wh)
Rated Energy	6,400mAh 5V (TYP 1A)
Input	USB-C: 5V=2.4A / 9V=2A
Output	USB-C: 5V=3A / 9V=2A / 12V=1.5A USB-A: 5V=3A / 9V=2A / 12V=1.5A Dual Ports: 5V=3A (MAX)
Dimensions	121.9mm × 59mm × 10.6mm (4.8" × 2.32" × 0.42")



► NPB1

Ultra Waterproof Power Bank

NPB1 SPEC

Battery Type	21700 Li-ion Battery
Capacity	5,000mAh 3.64V (18.2Wh)
Rated Energy	3,200mAh 5V (TYP 1A)
Input	Micro-USB: 5V=2A
Output	USB-A: 5V=2.4A 9V=2A (18W MAX)
IP Rating	IP68



► NPB2

Ultra Waterproof Power Bank

NPB2 SPEC

Battery Type	21700 Li-ion Battery
Capacity	10,000mAh 3.64V (36.4Wh)
Rated Energy	6,400mAh 5V (TYP 1A)
Input	Micro-USB: 5V=2A 9V=2A
Output	USB-A: 5V=2.4A 9V=2A 12V=1.5A Single Port: 5V=2.4A 9V=2A 12V=1.5A Dual Ports: 5V=2.4A (18W MAX)
IP Rating	IP68



► NPB4

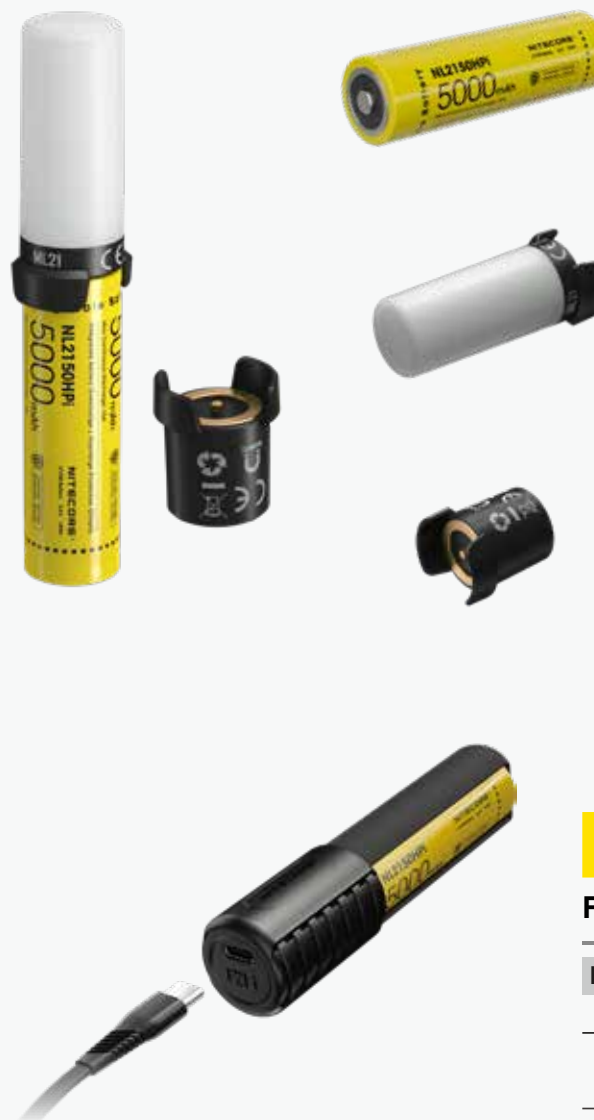
Ultra Waterproof Power Bank

NPB4 SPEC

Battery Type	21700 Li-ion Battery
Capacity	20,000mAh 3.64V (72.8Wh)
Rated Energy	12,400mAh 5V (TYP 1A)
Input	Micro-USB: 5V=2.4A 9V=2A USB-C: 5V=3A 9V=2A 12V=1.5A
Output	USB-A: 5V=3A 9V=2A 12V=1.5A USB-C: 5V=3A 9V=2A 12V=1.5A Multi Ports: 5V=3A
IP Rating	IP68



► 21700 Intelligent Battery System



21700 i Series Battery

NL2140i	NL2142LTHPi
NL2150i	NL2150HPi

ML21 Magnetic Light

Brightness	80 Lumens
CRI	≥ 90
Color Temperature	4000-4500K
Runtime	19h
Beam Diameter	12m
Peak Beam Intensity	9cd

MPB21 Magnetic Power Bank

Input	5V = 2A (MAX)
Output Voltage	4.2V±1% (Battery) 5V±5%(USB)
Output Current	2A (MAX)

► F21i

Fast Charging Power System

F21i SPEC

Input	5V = 2A / 9V = 2A
Output	Battery: 4.2V = 4A (MAX) USB-C: 5V = 2.4A / 9V = 2A / 12V = 1.5A



► F4

4 BATTERY SLOTS



Flexible Battery Charger & Power Bank

F4 SPEC

Compatible with	Li-ion / IMR
Input	DC 5V/2A
Capacity	60Wh (MAX)
Output voltage	4.2V±1% (Battery) / 5V±5% (USB)
Output current	2*1A, 4*0.5A (Battery) / 2*2A (USB)

F4 Compatible with

Li-ion / IMR: 18650





► **UM2**

2 BATTERY SLOTS



UM2 SPEC	
Compatible with	IMR / Li-ion / LiFePO4 / Ni-MH / Ni-Cd
Input	DC 5V/2A 9V/2A 18W (MAX)
Output voltage	4.35V±1% / 4.2V±1% / 3.7V±1% / 1.48V±1%
Output current	QC Mode: 1,500mA*2 (MAX) Standard Mode: 1,000mA*2 (MAX)



► **UM4**

4 BATTERY SLOTS



UM4 SPEC	
Compatible with	IMR / Li-ion / LiFePO4 / Ni-MH / Ni-Cd
Input	DC 5V/2A 9V/2A 18W (MAX)
Output voltage	4.35V±1% / 4.2V±1% / 3.7V±1% / 1.48V±1%
Output current	QC Mode: 1,500mA*1 (MAX), 1,500mA*2 (MAX), 750mA*4 (MAX) Standard Mode: 1,500mA*1 (MAX), 1,000mA*2 (MAX), 500mA*4 (MAX)

UM2 & UM4 Compatible with

IMR/Li-ion/LiFePO4: 10440, 14500, 14650, 16500, 16340 (RCR123), 16650, 17350, 17500, 17650, 17670, 17700, 18350, 18490, 18500, 18650, 18700, 20700, 21700, 22500, 22650, 25500, 26500, 26650, 26700
Ni-MH/Ni-Cd: AA, AAA, AAAA, C, D

► **UMS2**

2 BATTERY SLOTS



UMS2 SPEC	
Compatible with	IMR / Li-ion / LiFePO4 / Ni-MH / Ni-Cd
Input	DC 5V/2A 9V/2A 18W (MAX)
Output voltage	4.35V±1% / 4.2V±1% / 3.7V±1% / 1.48V±1%
Output current	QC Mode: 3000mA *1 (MAX), 2000mA *2 (MAX), Standard Mode: 2000mA *1 (MAX), 1000mA *2 (MAX)



► **UMS4**

4 BATTERY SLOTS



UMS4 SPEC	
Compatible with	IMR / Li-ion / LiFePO4 / Ni-MH / Ni-Cd
Input	DC 5V/2A 12V/1.5A 18W (MAX)
Output voltage	4.35V±1% / 4.2V±1% / 3.7V±1% / 1.48V±1%
Output current	QC Mode: 3000mA *1 (MAX), 2000mA *2 (MAX), 1000mA*4 (MAX) Standard Mode: 2000mA *1 (MAX), 1000mA *2 (MAX), 500mA*4 (MAX)



UMS2 & UMS4 Compatible with

IMR/Li-ion/LiFePO4: 10440, 14500, 14650, 16500, 16340 (RCR123), 16650, 17350, 17500, 17650, 17670, 17700, 18350, 18490, 18500, 18650, 18700, 20700, 21700, 22500, 22650, 25500, 26500, 26650, 26700
Ni-MH/Ni-Cd: AA, AAA, AAAA, C, D

► **NEW i2**

2 BATTERY SLOTS

Dual-Slot Intellicharger

NEW i2 SPEC	
Compatible with	IMR / Li-ion / LiFePO4 / Ni-MH / Ni-Cd
Input	AC 100~240V 50/60Hz 0.25A (MAX) 8W DC 9~12V
Output voltage	4.35V±1% / 4.2V±1% / 3.7V±1% / 1.48V±1%
Output current	500mA×2 / 1000mA×1



► **NEW i4**

4 BATTERY SLOTS

Four-Slot Intellicharger

NEW i4 SPEC	
Compatible with	IMR / Li-ion / LiFePO4 / Ni-MH / Ni-Cd
Input	AC 100~240V 50/60Hz 0.25A (MAX) 10W DC 9~12V 1A
Output voltage	4.35V±1% / 4.2V±1% / 3.7V±1% / 1.48V±1%
Output current	1.5A×1 / 0.75A×2 / 0.5A×2 / 0.375A×4



NEW i2 & NEW i4 Compatible with

Li-ion / IMR / LiFePO4:
10340, 10350, 10440, 10500, 12340, 12500, 12650, 13450, 13500, 13650, 14350, 14430, 14500, 14650, 16500, 16340 (RCR123), 16650, 17350, 17500, 17650, 17670, 18350, 18490, 18500, 18650, 22500, 22650, 25500, 26500, 26650
Flat-topped Batteries: 18700, 20700, 21700
Ni-MH/Ni-Cd: AA, AAA, AAAA, C, D

► **i8**

8 BATTERY SLOTS



Eight-Slot Intellicharger

Winner

i8 SPEC	
Compatible with	IMR / Li-ion / Ni-MH / Ni-Cd
Input	AC 100~240V 50/60Hz 0.6A (MAX) 30W DC 12V 3A
Output voltage	Battery: 4.2V±1% / 1.48±1% / USB: 5V±5%
Output current	1.5A×2 / 1A×4 / 0.75A×4 / 0.5A×8 USB: 5V*2.1A

i8 Compatible with

Li-ion / IMR:
10340, 10350, 10440, 10500, 12340, 12500, 12650, 13450, 13500, 13650, 14350, 14430, 14500, 14650, 16500, 16340(RCR123), 16650, 17350, 17500, 17650, 17670, 18350, 18490, 18500,18650, 22500, 22650,25500, 26500, 26650
Ni-MH/Ni-Cd: AA, AAA, C, D



The LC10 is a lightweight and portable magnetic USB charger with charging, discharging and lighting functions. It is compatible with almost all kinds of cylinder Li-ion batteries, which can charge devices with 2.0 USB and iOS devices via the charging port. It is ideal for charging the batteries anywhere anytime with the portable USB plug.

► LC10

Outdoor Magnetic Charger

LC10 SPEC	
Compatible with	IMR / Li-ion
Input	DC 5V ≥ 0.5A
Output voltage	Battery: 4.2V±1% USB: 5V±5%
Output current	1A MAX

LC10 Compatible with

Li-ion/IMR:
12650, 13450, 13500, 13650, 14350, 14430, 14500, 14650, 16500, 16340(RCR123), 16650, 17350, 17500, 17650, 17670, 17700, 18350, 18490, 18500, 18650, 18700, 20700, 21700, 22500, 22650, 22700, 25500, 26500, 26650, 26700
(Compatible with 3.6V or 3.7V cylinder rechargeable Li-ion battery)



NOTE: Battery is not included.

► Q6

6 BATTERY SLOTS

Six-Slot Li-ion Battery Quick Charger

Q6 SPEC	
Compatible with	IMR / Li-ion
Input	DC 12V 2000mA 24W
Output voltage	4.2V±1%
Output current	2A*2, 1A*4, 0.65A*6



► Q4

4 BATTERY SLOTS

Four-Slot Li-ion Battery Quick Charger

Q4 SPEC	
Compatible with	IMR / Li-ion
Input	DC 12V 2000mA 24W
Output voltage	4.2V±1%
Output current	2A*2, 1A*4

Q4 & Q6 Compatible with

Li-ion/IMR:
10340, 10350, 10440, 10500, 12340, 12500, 12650, 13450, 13500, 13650, 14350, 14430, 14500, 14650, 16500, 16340(RCR123), 16650, 17350, 17500, 17650, 17670, 18350, 18490, 18500, 18650, 22500, 22650, 25500, 26500, 26650
Flat-topped Batteries:
17700, 18700, 20700, 21700, 22700, 26700



► SC4

4 BATTERY SLOTS

Four-Slot Superb Charger

SC4 SPEC	
Compatible with	IMR / Li-ion / LiFePO4 / Ni-MH / Ni-Cd
Input	AC 100~240V 50/60Hz 1A (MAX) 40W DC 12V 3A
Output voltage	Battery: 4.35V±1% / 4.2V±1% / 3.7V±1% / 1.48V±1% USB: 5V±5%
Output current	3A*2 (MAX) 1.5A*4 USB: 2.1A (MAX)



► SC2

2 BATTERY SLOTS

Dual-Slot Superb Charger

SC2 SPEC	
Compatible with	IMR / Li-ion / LiFePO4 / Ni-MH / Ni-Cd
Input	AC 100-240V 50/60Hz 0.9A (MAX) 30W DC 12V 2.5A
Output voltage	Battery: 4.35V±1% / 4.2V±1% / 3.7V±1% / 1.48V±1% USB: 5V
Output current	3A + 2A MAX USB: 2.1A



SC4 & SC2 Compatible with

Li-ion / IMR / LiFePO4:
10340, 10350, 10440, 10500, 12340, 12500, 12650, 13450, 13500, 13650, 14350, 14430, 14500, 14650, 16500, 16340 (RCR123), 16650, 17350, 17500, 17650, 17670, 18350, 18490, 18500, 18650, 22500, 22650, 25500, 26500, 26650
Ni-MH / Ni-Cd: AA, AAA, AAAA, C, D



► D2

2 BATTERY SLOTS

Dual-Slot Digicharger

D2 SPEC	
Compatible with	IMR / Li-ion / LiFePO4 / Ni-MH / Ni-Cd
Input	AC 100-240V 50/60Hz 0.25A(MAX), DC 12V 1A
Output voltage	4.2V±1% / 3.7V±1% / 1.48V±1%
Output current	500mA×2

► D4

4 BATTERY SLOTS

Four-Slot Digicharger

D4 SPEC	
Compatible with	IMR / Li-ion / LiFePO4 / Ni-MH / Ni-Cd
Input	AC 100-240V 50/60Hz 0.35A (MAX), DC 12V 1A
Output voltage	4.2V±1% / 3.7V±1% / 1.48V±1%
Output current	375mA×4 / 750mA×2

D2 & D4 Compatible with

Li-ion / IMR / LiFePO4: 26650, 22650, 18650, 17670, 18490, 18350, 17500, 14500, 16340(RCR123), 10440
Ni-MH / Ni-Cd: AA, AAA, AAAA, C

► UI1 1 BATTERY SLOT



Portable USB Battery Charger

UI1 SPEC

Compatible with	IMR / Li-ion
Input	DC 5V/1A 5W
Output voltage	4.2V±1%
Output current	1000mA (MAX)



► UI2 2 BATTERY SLOTS



Portable Dual-Slot USB Battery Charger

UI2 SPEC

Compatible with	IMR / Li-ion
Input	DC 5V/2A 10W
Output voltage	4.2V±1%
Output current	1000mA*2 (MAX)



UI1 & UI2 Compatible with

IMR / Li-ion: 10340, 10350, 10440, 10500, 12340, 12500, 12650, 13450, 13500, 13650, 14430, 14500, 14650, 16500, 16340(RCR123), 16650, 17350, 17500, 17650, 17670, 18350, 18490, 18500, 18650, 20700, 21700, 22500, 22650, 25500, 26500, 26650

► VCL10

Multifunctional 3-in-1 Car Charger



VCL10 SPEC

Input	DC 12V 2.5A (MAX)
Output	DC 5V 2.4A (MAX)
Quick Charge 3.0	DC 3.6V-12V 2.4A (MAX)
Quick Charge 2.0	DC 5V / 9V / 12V 2.4A (MAX)



► V2

In-Vehicle Battery Charger

V2 SPEC

Compatible with	IMR / Li-ion / Ni-MH / Ni-Cd
Input	DC 12V 42W (MAX)
Output	Battery: 4.2V±1% / 3A*2 (MAX) 1.48V±1% / 2A*2 (MAX) USB: 5V±5% 1A*2 / 2.1A*1 (MAX)

V2 Compatible with

Li-ion / IMR: 14500, 14650, 16500, 16340(RCR123), 16650, 17350, 17500, 17650, 17670, 18350, 18490, 18500, 18650, 22500, 22650, 25500, 26500, 26650,
Unprotected batteries: 17700, 18700, 20700, 21700, 22700, 26700
Ni-MH(Ni-Cd): AA,C



► UA42Q

2-Port QC USB Adapter

UA42Q SPEC

Input	100-240V~ 50/60Hz 1A (MAX)
Output	5V=3A, 9V=2A, 12V=1.5A 36W MAX



► UA55

5-Port USB Desktop Adapter

UA55 SPEC

Input	100-240V~ 50/60Hz 1.5A(MAX)
Output	5V=10A (2A MAX Per Port) 50W MAX



► UA66Q

6-Port QC USB Desktop Adapter

UA66Q SPEC

Input	100-240V~ 50/60Hz 1.5A(MAX)
Output	5V USB Ports: 5V=10A (2A MAX Per Port), 50W MAX QC 3.0 Port: 5V=2A / 9V=2A / 12V=1.5A, 18W MAX Total 68W MAX



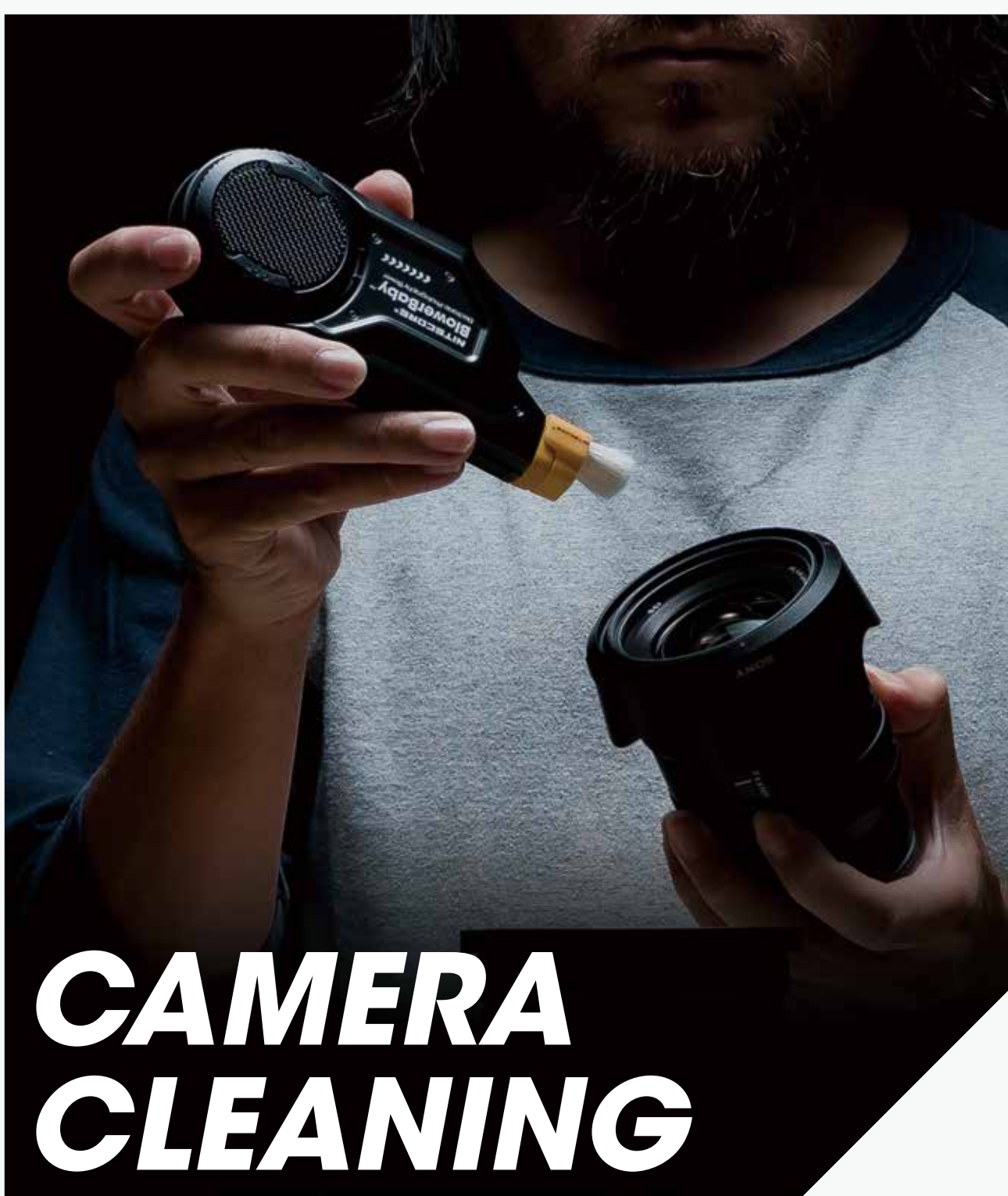
► MBS20

Material Bottle Storeroom

MBS20 SPEC

Motor	3RPM (MAX)
Input	USB 5V=2A
Output	USB 5V=2A (MAX)
Dimensions	152.8mm × 99.7mm × 160.3mm (6.02" × 3.93" × 6.31") (Stand Not Included)
Weight	426.2g (15.03oz) (Stand Included)
Materials	Fire Retardant PC Materials





CAMERA CLEANING SOLUTIONS

► Electronic Cleaning Solutions



BlowerBaby™

THE FIRST ELECTRONIC PHOTOGRAPHY BLOWER
IN THE WORLD

USB-C
Rechargeable

Max Wind Speed of
70 km/h (43.5 mph)

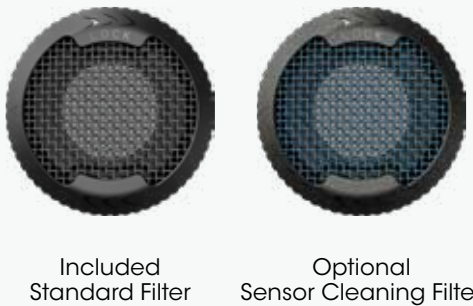
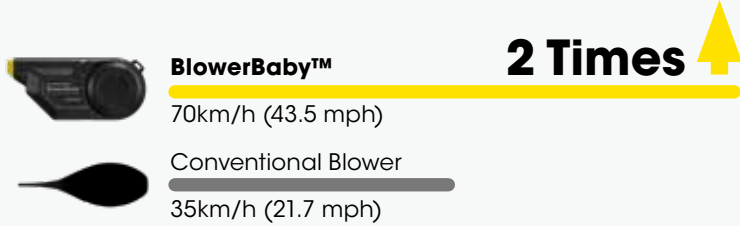
Electronically
Controlled

Unidirectional
Air Intake

Aluminum Alloy
Construction

Technical Specifications	
Input	5V=2A
Rated Power	22.2W
Battery Capacity	1500mAh
Rotational Speed	26000RPM
Wind Speed	70 km/h (43.5 mph) (with Standard Filter) 50 km/h (31.1 mph) (with Sensor Cleaning Filter)
Dimensions	137mm x 61mm x 30mm (5.39" x 2.4" x 1.18")
Weight	153g (5.4oz)
Accessories	Standard Filter, USB-C Charging Cable

70 km/h (43.5 mph) Strong Wind
= Beaufort Wind Force 8 (Gale)



Your Best Cleaning Partner

Camera Cleaning Pen

Magnetic Storage Compartment for Cleaning Brushes

Camera Body Cleaning Brush

Magnetic Carbon Cleaning Tip

Lens Cleaning Brush

Comprehensive Cleaning Solutions



Basic Cleaning
For the camera body, flash, grip, battery compartment, ports, and more



Lens Cleaning
Best used with the Lens Cleaning Brush for the camera lens, smartphone cameras, etc.



Sensor Cleaning
Best used with the NITECORE Sensor Cleaning Kit

Daily Cleaning



Model Kits & Action Figures



Watches & Jewelry



Coffee Grinders



Musical Instruments

► Sensor & Lens Cleaning Solutions

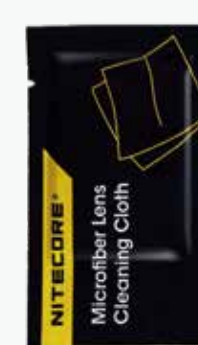
M4/3 Full Frame Medium Format

Mini Swabs
Specially for Mirrorless Cameras

Full Frame APS-C



Sensor Cleaning Fluid



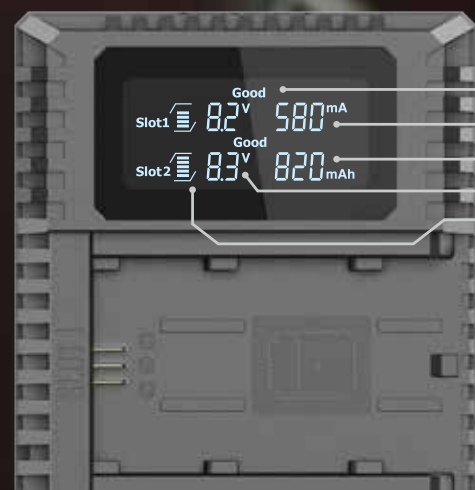
Microfiber Lens Cleaning Cloth



Lens Cleaning Fluid

PHOTO ACCESSORIES

Enjoy the inexhaustible power supply on the go



BATTERY HEALTH DETECTION

Battery Health
Charging Current
Charged Volume
Charged Voltage
Battery Level

Slot1 Good 8.2V 580mA
Slot2 Good 8.3V 820mAh
Slot1 Good 7.5V 1000mA
Slot1 Normal 7.5V 1000mA
Slot1 Poor 7.5V 1000mA

USB CAMERA BATTERY CHARGERS

NITECORE USB travel chargers designed specifically for Leica, Canon, Nikon, Sony, Fujifilm, Hasselblad and GoPro cameras. They all feature state of the art technologies and designs which make them some of the most sought-after products for enthusiastic photographers.



USB Charger For SONY

* SONY is a registered trademark of SONY,INC.



► USN4 PRO

2 BATTERY SLOTS

Compatible with SONY's NP-FZ100

Input
DC 5V/2A or 9V/2A
Output voltage
Slot 1 8.4V±1%
Slot 2 8.4V±1%
Output current
QC Mode: 1200mA*1(MAX), 800mA*2(MAX) Standard Mode: 1000mA*1(MAX)

NP-FZ100

Sony α1
Sony α7 III
Sony α7 IV
Sony α7R III
Sony α7R IV
Sony α7S III
Sony α7C
Sony α9 (ILCE-9)
Sony α9 II
Sony α6600
Sony FX3



► USN3 PRO

2 BATTERY SLOTS

Compatible with SONY's NP-FM500H / NP-F730 / NP-F750 / NP-F770 / NP-F970 / NP-F550

Input
DC 5V/2A or 9V/2A
Output voltage
Slot 1 8.4V±1%
Slot 2 8.4V±1%
Output current
QC Mode: 1200mA*1(MAX), 800mA*2(MAX) Standard Mode: 1000mA*1(MAX)

NP-FM500H

Sony α99 II
Sony α77 II
Sony α99
Sony α68

NP-F730

CCD-TRV98

NP-F750

NEX-FS700
HXR-NX5N
HXR-NX100
HXR-AX2000E
FDR-AX1

NP-F770

HXR-NX3
HXR-NX5

NP-F970

NEX-FS700
NEX-FS100J
PXW-Z100
HVR-HD1000E
HXR-AX2000E

NP-F550

UPX-2000
MVC-FD97
MVC-FDR1



► USN2

2 BATTERY SLOTS

Compatible with SONY's NP-BX1

Input
DC 5V/2A
Output voltage
Slot 1 4.2V±1%
Slot 2 4.2V±1%
Output current
600mA*2 (MAX)

NP-BX1

DSC-HX350
DSC-H400
DSC-HX400
DSC-RX100M5
DSC-RX1RM2
DSC-RX100M4
DSC-WX500
DSC-HX90
DSC-WX350
DSC-HX60
DSC-RX100
DSC-RX100M2
DSC-RX100M3
DSC-RX1
DSC-RX1R
DSC-HX50
DSC-HX300

HDR-A300R
FDR-X3000
HDR-AS50
HDR-AS200V
FDR-X1000V
HXR-CX405
HXR-PJ410
HXR-MV1
HXR-GWP88E
HXR-CX240E
HXR-PJ240E
ZV-1

(and more compatible models)



► USN1

2 BATTERY SLOTS

Compatible with SONY's NP-FW50

Input
DC 5V/2A
Output voltage
Slot 1 8.4V±1%
Slot 2 8.4V±1%
Output current
1000mA (MAX)

NP-FW50

Sony α5000
Sony α5100
Sony α6000
Sony α6100
Sony α6300
Sony α6400
Sony α6500
Sony a7
Sony a7 II
Sony a7R
Sony a7R II
Sony a7S
Sony a7S II
Sony ILCE-QX1
Sony ILCE-QX1L
Sony DSC-RX10
Sony DSC-RX10 II
Sony DSC-RX10 III
Sony DSC-RX10 IV
Sony ZV-E10



USB Charger For Canon

* Canon is a registered trademark of Canon, INC.



► UCN5



2 BATTERY SLOTS

Compatible with Canon's LP-E17

Input
DC 5V/2A or 9V/2A
Output voltage
Slot 1 8.4V±1%
Slot 2 8.4V±1%
Output current
QC Mode: 750mA*1 (MAX), 750mA*2 (MAX) Standard Mode: 750mA*1 (MAX), 375mA*2 (MAX)

LP-E17

Canon EOS RP
Canon EOS 800D
Canon EOS 760D
Canon EOS 750D
Canon EOS 200D
Canon EOS 200D II
Canon EOS 77D
Canon EOS M6
Canon EOS M6 Mark II
Canon EOS M5
Canon EOS M3



USB Charger For Nikon

* Nikon is a registered trademark of Nikon, INC.



► UNK2

2 BATTERY SLOTS

Compatible with Nikon's
EN-EL15 / EN-EL15a / EN-EL15b

Input
DC 5V/2A
Output voltage
Slot 1 8.4V±1%
Slot 2 8.4V±1%
Output current
1000mA (MAX)

EN-EL15/ EN-EL15a/ EN-EL15b

Nikon D500
Nikon D600
Nikon D610
Nikon D750
Nikon D780
Nikon D800
Nikon D800E
Nikon D810
Nikon D810A
Nikon D850
Nikon D7200
Nikon D7500
Nikon D7000
Nikon D7100
Nikon 1V1
Nikon V1
Nikon Z5
Nikon Z6
Nikon Z6II
Nikon Z7
Nikon Z7II



► UCN4 PRO

2 BATTERY SLOTS

Compatible with Canon's
LP-E4 / LP-E4N / LP-E19

Input
DC 5V/2A or 9V/2A
Output voltage
Slot 1 12.6V±1%
Slot 2 12.6V±1%
Output current
QC Mode: 1000mA*1 (MAX), 600mA*2 (MAX) Standard Mode: 500mA*1 (MAX)

LP-E4 / LP-E4N / LP-E19

EOS-1D X Mark III
EOS-1D X Mark II
EOS-1Ds Mark III
EOS-1D X
EOS-1D Mark IV
EOS-1D Mark III
EOS-1D C



► UNK1

2 BATTERY SLOTS

Compatible with Nikon's
EN-EL15 / EN-EL14 / EN-EL14a

Input
DC 5V/2A
Output voltage
Slot 1 (EN-EL15) 8.4V±1%
Slot 2 (EN-EL14/ EN-EL14a) 8.4V±1%
Output current
1000mA (MAX)

EN-EL15

Nikon D500
Nikon D600
Nikon D610
Nikon D750
Nikon D780
Nikon D800
Nikon D800E
Nikon D810
Nikon D810A
Nikon D850
Nikon D7000
Nikon D7100
Nikon D7200
Nikon D7500
Nikon 1V1
Nikon V1
Nikon Z5
Nikon Z6
Nikon Z6II
Nikon Z7
Nikon Z7II

EN-EL14a / EN-EL14

Nikon D3100
Nikon D3200
Nikon D3300
Nikon D3400
Nikon D5100
Nikon D5200
Nikon D5300
Nikon D5500
Nikon D5600
Nikon Df
Nikon Coolpix P7000
Nikon Coolpix P7100
Nikon Coolpix P7700
Nikon Coolpix P7800



► UCN3

2 BATTERY SLOTS

Compatible with Canon's LP-E6N

Input
DC 5V/2A
Output voltage
Slot 1 8.2V±1%
Slot 2 8.2V±1%
Output current
1000mA (MAX)

LP-E6N

Canon 6D Mark II
Canon 5D Mark IV
Canon 80D
Canon 5Ds
Canon 5Ds R
Canon 70D
Canon 6D
Canon 5D Mark III
Canon 60D
Canon 90D
Canon 7D
Canon 7D Mark II
Canon EOS R
Canon EOS Ra
Canon EOS R5
Canon EOS R6



► UCN2 PRO

2 BATTERY SLOTS

Compatible with Canon's LP-E6N

Input
DC 5V/2A or 9V/2A
Output voltage
Slot 1 8.4V±1%
Slot 2 8.4V±1%
Output current
QC Mode: 1200mA*1 (MAX), 800mA*2 (MAX)
Standard Mode: 1000mA*1 (MAX)

LP-E6N

Canon EOS 6D Mark II
Canon EOS 5D Mark IV
Canon EOS 80D
Canon EOS 5DS
Canon EOS 5DS R
Canon EOS 70D
Canon EOS 6D
Canon EOS 5D Mark III
Canon EOS 60D
Canon EOS 90D
Canon EOS 7D
Canon EOS 7D Mark II
Canon EOS R
Canon EOS Ra
Canon EOS R5
Canon EOS R6



► UCN1

2 BATTERY SLOTS

Compatible with Canon's
LP-E6 / LP-E6N / LP-E8

Input
5V/2A
Output voltage
Slot 1 (LP-E6/LP-E6N) 8.4V
Slot 2 (LP-E8) 8.4V
Output current
1000mA (MAX)

LP-E6/LP-E6N

EOS 5D Mark II
EOS 5D Mark III
EOS 5D Mark IV
EOS 6D Mark II
EOS 7D Mark II
EOS 5DS
EOS 5DS R
EOS 6D
EOS 7D
EOS 60D
EOS 60Da
EOS 70D
EOS 80D
EOS 90D
XC10
EOS R
EOS Ra
EOS R5
EOS R6

LP-E8

EOS Rebel T2i
EOS Rebel T3i
EOS Rebel T4i
EOS Rebel T5i
EOS 550D
EOS 600D
EOS 650D
EOS 700D
EOS Kiss X4
EOS Kiss X5
EOS Kiss X6

X System Batteries

Hasselblad X1D II 50C
Hasselblad X1D-50C



USB Charger For Fujifilm

* Fujifilm is a registered trademark of Fujifilm, INC.



► FX3

USB-C
RECHARGEABLE

2 BATTERY SLOTS

Compatible with Fujifilm's NP-W235

Input
DC 5V/2A or 9V/2A
Output voltage
Slot 1 8.4V±1%
Slot 2 8.4V±1%
Output current
QC Mode: 1,500mA*1 (MAX), 1,000mA*2 (MAX)
Standard Mode: 1,000mA*1 (MAX), 500mA*2 (MAX)

NP-W235

Fujifilm X-T4
Fujifilm GFX100S



► FX2 PRO

2 BATTERY SLOTS

Compatible with Fujifilm's NP-T125

Input
DC 5V/2A or 9V/2A
Output voltage
Slot 1 12.6V±1%
Slot 2 12.6V±1%
Output current
QC Mode: 800mA*1 (MAX), 600mA*2 (MAX)
Standard Mode: 500mA*1 (MAX)

NP-T125

Fujifilm GFX 50S
Fujifilm GFX 50R
Fujifilm GFX 100



USB Charger For Hasselblad

* Hasselblad is a registered trademark of Hasselblad, INC.



► UHX1 PRO

2 BATTERY SLOTS

Compatible with Hasselblad's
X System Batteries

Input
DC 5V/2A or 9V/2A
Output voltage
Slot 1 8.4V±1%
Slot 2 8.4V±1%
Output current
QC Mode: 1200mA*1 (MAX), 800mA*2 (MAX)
Standard Mode: 800mA*1 (MAX)

► FX1

2 BATTERY SLOTS

Compatible with Fujifilm's
NP-W126 / NP-W126S

Input
DC 5V/2A
Output voltage
Slot 1 8.4V±1%
Slot 2 8.4V±1%
Output current
1000mA (MAX)

NP-W126/NP-W126S

Fujifilm X-Pro1
Fujifilm X-Pro3
Fujifilm X-H1
Fujifilm X-T1
Fujifilm X-T2
Fujifilm X-T3
Fujifilm X-A2
Fujifilm X-A5
Fujifilm X-A10
Fujifilm X-E2
Fujifilm X-E3
Fujifilm X-T10
Fujifilm X-T30
Fujifilm X-T200
Fujifilm X100V
Fujifilm X-Pro2
Fujifilm X-S10
Fujifilm X-M1
Fujifilm X-T2
Fujifilm X-A1
Fujifilm X-A3
Fujifilm X-A7
Fujifilm X-E1
Fujifilm X-E2S
Fujifilm X-E4
Fujifilm X-T20
Fujifilm X-T100
Fujifilm X100F

FinePix
HS50EXR
HS30EXR
HS33EXR



USB Charger For Leica

* Leica is a registered trademark of Leica, INC.



► ULM10 PRO

2 BATTERY SLOTS

Compatible with Leica's BP-SCL5

Input
DC 5V/2A or 9V/2A
Output voltage
Slot 1 8.25V±1%
Slot 2 8.25V±1%
Output current
QC Mode: 1200mA*1 (MAX), 800mA*2 (MAX)
Standard Mode: 700mA*1 (MAX)

BP-SCL5
M10
M10 MONOCHROM
M10-R



► UL109

2 BATTERY SLOTS

Compatible with Leica's BP-DC15-E
Compatible with Panasonic's DMW-BLE9

Input
DC 5V/2A
Output voltage
Slot 1 8.4V±1%
Slot 2 8.4V±1%
Output current
1000mA (MAX)

Leica
BP-DC15-E
D-lux typ109

Panasonic
DMW-BLE9
GF3
GF5



► ULSL

1 BATTERY SLOT

Compatible with Leica's BP-SCL4

Input
DC 5V/2A
Output voltage
Slot 1 8.4V±1%
Output current
1000mA (MAX)

BP-SCL4
Leica SL Typ601
Leica SL2
Leica SL2-S
Leica Q2
Leica Q2 Monochrom



► UGP5

2 BATTERY SLOTS

Compatible with GoPro's
HERO5 Black Battery

Input
USB DC 5V≥ 0.5A
Output voltage
4.35V±1%
Output current
750mA × 2 MAX

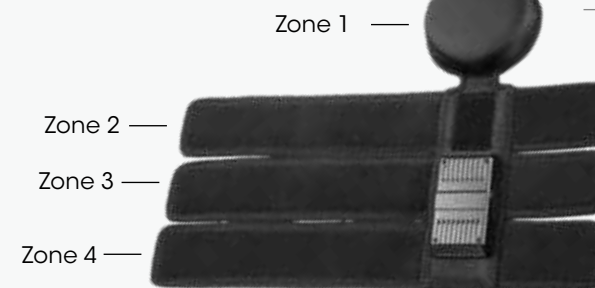
HERO5 Black Battery



► LHH82

Full Wrap-Around Lens Heater

LHH82 SPEC	
Input	5V=2A (MAX)
Input Port	USB-C
Operating Temperature	-40°C~40°C (-40°F~104°F)
Heating Temperature	45±5°C (113±9°F)
Compatible with	Camera lenses with a filter size of 72~82mm Including Canon EF 70-200mm f/2.8L IS III USM and more
Main Materials	1680D Nylon
Dimensions	Zone 1: φ85mm (φ3.35") Zone 2~4: 394mm × 168mm (15.51" × 6.61")
Weight	190g (6.70oz)
Accessories	USB Charging Cable (USB-A to USB-C, 1.5m)



► Superior Prime Full Frame Cinema Lenses



25mm / T2.1



35mm / T2.0



50mm / T2.0



75mm / T2.0



100mm / T2.0

► Camera Batteries



► NC-BP001 Battery Pack for SONY NP-FW50

Voltage	Capacity
7.4V	1,030mAh 7.6Wh

NP-FZ50

α5000 α5100 α6000
α6100 α6300 α6400,
α6500 α7 α7 II
α7R α7R II α7S
α7S II DSC-RX10 III
DSC-RX10 DSC-RX10 II
DSC-RX10 IV ILCE-QX1
ILCE-QX1L



► NC-BP002 Battery Pack for SONY NP-FZ100

Voltage	Capacity
7.2V	2,250mAh 16.2Wh

NP-FZ100

α1 α7 III α7R III
α7R IV α9 (ILCE-9)
α9 II α6600
α7S III FX3



► NC-BP003 Battery Pack for FUJIFILM NP-W235

Voltage	Capacity
7.2V	2,250mAh 16.2Wh

NP-W235

X-T4,
GFX100S



► NC-BP004 Battery Pack for FUJIFILM NP-W126S

Voltage	Capacity
7.4V	1,140mAh 8.4Wh

NP-W126S

X-H1 X-Pro3 X-Pro2 X-Pro1
X-T3 X-T2 X-T1 X-T30
X-T20 X-T10 X-T100 X-E3
X-E2S X-E2 X-E1 X-M1
X-A7 X-A5 X-A3 X-A2
X-A1 X-A10 X100F X100V
X-S10 X-E4 FinePix HS50EXR
FinePix HS30EXR FinePix HS33EXR



► NC-BP005 Battery Pack for CANON LP-E6N

Voltage	Capacity
7.2V	1,900mAh 13.6Wh

LP-E6N

EOS 6D Mark II
EOS 5D Mark IV
EOS 5D Mark III
EOS 7D Mark II
EOS 80D EOS 5DS
EOS 5DS R EOS 70D
EOS 6D EOS 60D
EOS 7D EOS 90D
EOS R EOS Ra
EOS R5 EOS R6



► NC-BP006 Battery Pack for NIKON EN-EL15b

Voltage	Capacity
7.2V	2,040mAh 14.6Wh

EN-EL15b

D600 D610
D750 D800
D800E D810
D810A D7000
D7100 D7200
TV1 V1
D500 Z5
Z 6II Z 7II



► NP-F750 Compatible with SONY's Camera

Voltage	Capacity
7.4V	5,200mAh 38.5Wh



► NP-F970 Compatible with SONY's Camera

Voltage	Capacity
7.2V	7,800mAh 56.16Wh

NP-F750

Sony NEX-FS700
Sony HXR-NX5N
Sony HXR-NX100
Sony HDR-AX2000E
Sony FDR-AX1

NP-F970

Sony NEX-FS700
Sony NEX-FS100J
Sony PXW-Z100
Sony HVR-HD1000E
Sony HDR-AX2000E

► Smart Camera Batteries



► NFZ100 Compatible with SONY's Camera

Voltage	Capacity
7.2V	2,280mAh 16.4Wh

NFZ100

Sony α7 III
Sony α7R III
Sony α9 (ILCE-9)



TIPA World Awards 2021
Best Power Accessory

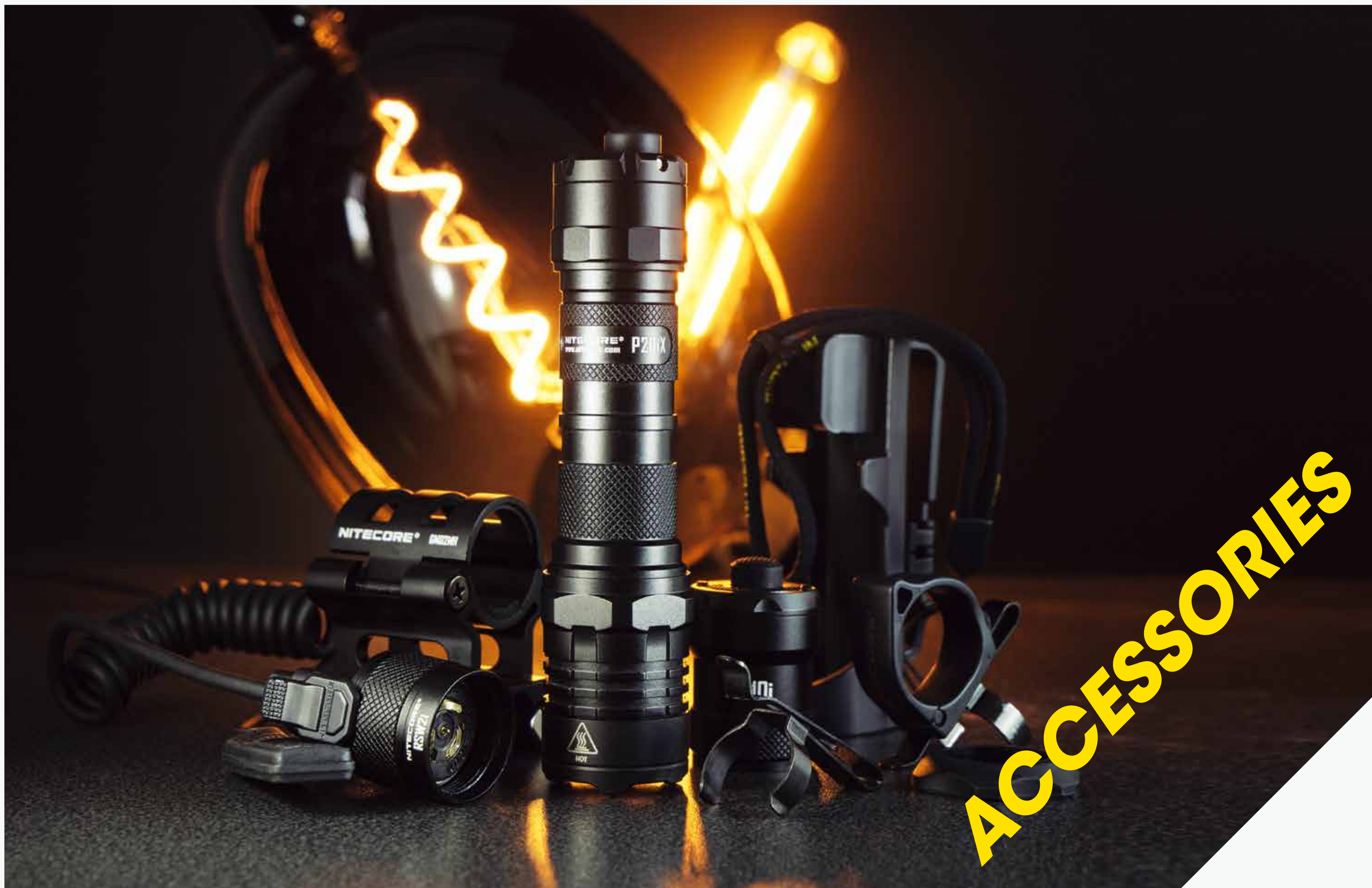
► SCL10

800
Lumens

39
Meters

96 x High CRI LEDs
2500K-6300K

2-in-1 Smart Camera Light & Power Bank



► Rechargeable Li-ion Batteries

Model	Specification	Capacity
NL1823	18650	2300mAh
NL1826	18650	2600mAh
NL1832	18650	3200mAh
NL1834	18650	3400mAh
NL1835	18650	3500mAh
NL166	16340	650mAh
NL1485	14500	850mAh
NL2140	21700	4000mAh
NL2145	21700	4500mAh
NL2150	21700	5000mAh



NITECORE rechargeable Li-ion batteries feature higher energy intensity, better power storage and longer runtime compared to other batteries, and environmental-friendly that can be recharged for over 500 times.

► Micro-USB/USB-C Rechargeable Li-ion Batteries

Model	Specification	Capacity
NL1826R	18650	2600mAh
NL1834R	18650	3400mAh
NL1835R	18650	3500mAh
NL1665R	16340	650mAh
NL1475R	14500	750mAh
NL2140R	21700	4000mAh
NL2150R	21700	5000mAh
NL2150HPR	21700	5000mAh



With a built-in Micro-USB / USB-C port, it is convenient to charge the rechargeable Li-ion batteries via a USB cable.

► High Performance Batteries

Model	Specification	Capacity	Discharge Current
NL1835HP	18650	3500mAh	8A
NL1835LTHP	18650	3500mAh	8A
IMR18650 3100mAh(For TM28)	18650	3100mAh	10A
NL2140HP	21700	4000mAh	15A
NL2145HP	21700	4500mAh	15A
NL2150HP	21700	5000mAh	15A
NL2150HPR	21700	5000mAh	15A



Specially designed for high performance products, it features high discharge current and excellent output with resistance to extreme conditions, capable of driving your devices to the best performance.

► Low-temperature Resistant Batteries

Model	Specification	Capacity	Discharge Current
NL1835LTHP	18650	3500mAh	8A
NL2142LTP	21700	4200mAh	8A
NL2142LTHPR	21700	4200mAh	15A
NL2142LTHPi	21700	4200mAh	15A



Specially designed for freezing environment like high altitude area or severe cold area, it is low temperature resistant even at the lowest of -40°C.

► 21700 i Series Battery

Model	Specification	Capacity	Discharge Current
NL2140i	21700	4000mAh	8A
NL2150i	21700	5000mAh	8A
NL2150HPi	21700	5000mAh	15A
NL2142LTHPi	21700	4200mAh	15A



As a patent product developed by NITECORE, the 21700 i Series Battery is a proprietary 21700 rechargeable Li-ion battery featuring dual way output with positive and negative polarities at both ends and a high energy density.

► Helmet Clip

NHC10

A helmet clip allows for mounting a headlamp on a thin-edged helmet that does not include headlamp clips.



► Helmet Mounts

LMA1

The LMA1 is a flashlight helmet mount compatible with Ops-Core ARC Rails specially designed for law enforcement, firefighting, search and rescue. It is able to hold a flashlight with a standard tube diameter of 1" (25.4mm) and 360° rotatable with quick and easy adjustment to 8 directions.



HRM2

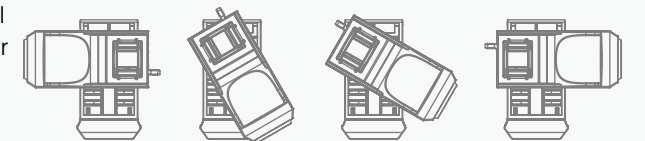
Specially designed for law enforcement and firefighting, the HRM2 is a helmet mount constructed from engineering plastic featuring solidness, lightweight and wearproof. It can be easily installed and conveniently adjust the beam angle with a 3D pivoting system.



► Tactical Holsters

Specially designed for law enforcement, NITECORE tactical holsters including NTH10, NTH20 and NTH25 perfectly fit your duty belt to enable hands-free operations and enables a quick draw of your tactical flashlight.

Compatible with belts of 1¼", 1½", 1¾", 2", 2¼"



NTH10



NTH20



NTH25

Compatible with:



► Gun Mounts

	Type	Compatible Tube Diameter
GM02	Picatinny Rail Mount	1" (25.4mm)
GM02MH	Magnetic Mount	1" (25.4mm)
GM03	Generic Adjustable Mount	0.3"-1.1" (8mm-28mm)
GM04	Generic Fixed Mount	0.7"-1" (18mm-25.4mm)
GM05	Generic Scope Mount	1"-1.2" (25.4mm-30mm)
GM06	Picatinny Rail Mount	1" (25.4mm)



► Handle Mount

NHM10

Specially designed for TM Series. Treated with HAIII military grade hard-anodized finish, it is impact and crush resistant, making the flashlight easy to carry.



► Tailcap Signal Light

TSL10i

Specially designed for i-Generation flashlights, it has multiple flashing modes including white, blue, green, red and red/blue warning flashing.



► Tactical Ring Pro

NTR10

The NTR10 is a tactical accessory to enable a unique and flexible way of carrying or operating a flashlight. It can be mounted on the specially designed slots of the latest NITECORE tactical flashlights according to the size of the user's hand.



► Tactical Remote Switch

Noiseless pressure pad switch with professional and convenient operation, ideal for law enforcement, hunting and more scenarios.



	Compatible Models
RSW1	SRT7GT, CU6, MH27, MH27 UV
RSW2	P10 V2, P20 V2, P20UV V2
RSW2D	CI7
RSW2i	P10i, P20i, P20i UV, P30i, P10iX, P20iX
RSW3	NEW P30, MH12S, MH12 V2, MH25S, MH25 V2

► Tactical Lanyards

NTL10 / NTL20

Compatible with various types of flashlights, the lanyard enables lighting tools to be hung, suspended or fastened to other objects, thus preventing flashlights from falling or missing.



► Window Breaker

NWB10

Constructed from stainless steel, it can serve as a window breaker or an escape tool in emergency. It is easy to mount and dismount.



► Emergency Electronic Whistle



IDEA 2021 Featured Finalist



Good Design Award 2021

AWARD-WINNING PRODUCT DESIGN



NWE30
Emergency Electronic Whistle

► Bike Mount

BM02



BM03



NITECORE Bicycle Mount fits any flashlight with 1" body diameter, providing quick and easy mounting without any tools, tightly fit different sizes of handlebars.

► Interchangeable Tail Cap

NTC1

Specially designed for law enforcement, it is designed to enable an ultimate tactical performance.



NTC2

Specially designed for outdoor activities, it is a U-shape tail cap to prevent accidental activation with tail stand capability.



	Compatible Models
NTC1	18650 flashlights with single tail switch, including SRT7GT, MH27, MH27 UV and more
NTC2	21700 flashlights with single tail switch, including MH12S, MH25S, MH12 V2, MH25 V2, NEW P12, NEW P30 and more

► Flexible USB Stand

With the flexible micro-USB / USB-C stand, the keychain lights can become a reading lamp and enjoy the inexhaustible power supply on the go even in the charging status to avoid outdoor power shortage.

USB-C Version



► Nylon Braided USB-C Charging Cable

UAC20

The UAC20 is a USB-C to USB-A 2.0 nylon braided charging cable with a max current of 3A, compatible with the mainstream USB-C devices. The nylon braiding with multiple protections makes it fearless of the outdoor environments.



► Silicone Grease

SG7



Silicone Grease is used for lubricating the threads of flashlights.

► Traffic Wands

NTW25, NTW32, NTW34, NTW40



Made from PC material that features crush, wear and high temperature resistance, traffic wand can turn flashlights into an orange traffic wand for traffic control, road guide and distress signal.

► Filters



Utilized a toughened ultra-clear glass lens with anti-reflective coating that provides impact resistance and maximum light penetrability. Flashlights equipped with the red/green/blue filters to deliver soft red/green/blue light, suitable for short range reading.

► Battery Magazine

NBM40



The NBM40 battery magazine provides ample space to accommodate 4 × 18650 batteries or serves as a carrying case for E-liquid vials and atomizers.

► Diffusers

NDF25, NDF32, NDF34, NDF40



Constructed from ABS materials, diffuser can convert flashlight output into a soft, white and diffused flood beam, great for comfortable reading, camping and more.

► Titanium / Aluminum Collection

► NTP48

Titanium Alloy
Mechanical Pencil



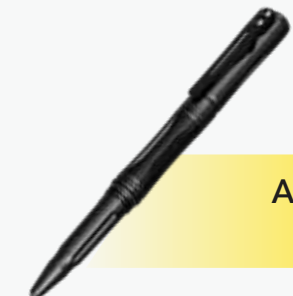
► NTP31

Aluminum Alloy
Bolt Action Tactical Pen



► NTP21

Aluminum Alloy
Tactical Pen



► NTP10

Titanium Alloy
Tactical Pen



► NTK07

Titanium Alloy
Ultra-Slim Unibody Knife



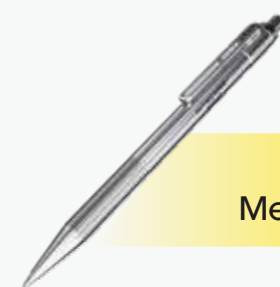
► NSH10

Titanium Alloy
Multiuse Snap Hook



► NTP40

Titanium Alloy
Mechanical Pencil



► NTP30

Titanium Alloy
Bolt Action Tactical Pen



► NTP20

Titanium Alloy
Tactical Pen



► NTK10

Titanium Alloy
Utility Knife



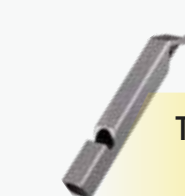
► NTK05

Titanium Alloy
Keychain Knife



► NWS10

Titanium Alloy Unibody
Emergency Whistle



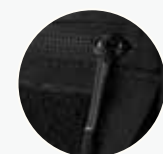


► BP Series

BP18 Commuter Backpack

NEW

Features



Premium YKK zippers

Dual frontal and top zipper design for quick storage and access

MOLLE Strap System for modular extensions

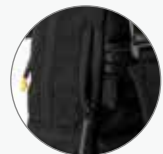


18L (1,098 cu in) main compartment available to carry a 14" laptop/tablet

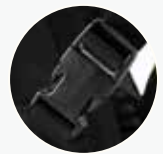
Quick detachable shoulder straps for switching between various carry modes



Straw/cable channel on the top side



UTX Duraflex buckles



Concealed anti-hook side compartments

Specifications

Capacity: 18L / 1,098 cu in
Dimensions: 47cm x 24cm x 16cm /
18.5" x 9.4" x 6.3"
Weight: Approx. 710g / 1.6 lbs

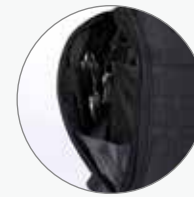


Fishbone Carrying System for outstanding ergonomic comfort and breathability



BP16 Commuter Backpack

Features



High capacity side compartment



Innovative thermal insulation side compartment



Specifications

Capacity: 16L / 976 cu in
Dimensions: 46cm x 29cm x 14cm / 18.1" x 11.4" x 5.5"
Weight: Approx. 815g / 1.8 lbs

NEW

16L (976 cu in) main compartment



BP20 Multi-Purpose Backpack

TEST
TACTICAL
GEAR
SIEGER

Features

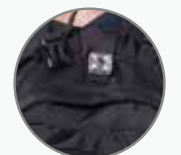
Reinforced handheld grip
Quick and convenient

Widget area
Attaching nametapes or reflective patches



Detachable MOLLE system
For hanging additional bags, pouches or gears

Warning light mounting point
Ensures safety for night walking and riding

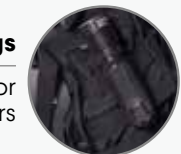


Lengthened pull tab
Glove-friendly



Compression strap
· To streamline the load and prevent it from shifting
· With hook-and-loop for storage

Side nylon webbings
For hanging pouch or gears



Specifications

Capacity: 20L / 1,220.5 cu in
Dimensions: 45cm x 28cm x 12cm / 17.7" x 11" x 4.7"
Weight: Approx. 1.5kg / 3.3 lbs

BP25 Multi-Purpose Modular Backpack

Specifications

Capacity: 25L / 1,525.6 cu in
Dimensions: 28cm x 16.5cm x 45cm / 11.0" x 6.5" x 17.7"
Weight: Approx. 1.46kg / 3.22 lbs





► MP Series

Modular Backpacks



MP20



MP25



MP30

Features

- + Excellent and flexible carrying capability in harsh environments
- + Wearproof and water resistant 500D Nylon fabric
- + Laser cut MOLLE System for modular extensions
- + Interior design with combination of loop surface and MOLLE System
- + Outstanding carrying system increases the ergonomic comfort
- + Innovative dual duct channel design for the drink tube / charging cable on top of both sides
- + Premium YKK zippers
- + UTX Duraflex buckles
- + Optional inner and outside modules available



► SLB Series



SLB02
Flap Messenger Bag



SLB09
Commuter Sling Bag

► NEB Series



NEB10
Excursion Bag



NEB30
Commuter Bag

► NPP Series



NPP10
Pocket Pouch



NPP20
Pocket Pouch



NPP30
Pocket Pouch



NPP50
Fanny Pack



NPP40
Sacoche Bag

► NDP Series



NDP10
Daily Pouch



NDP20
Daily Pouch



NUP10
Utility Pouch



NUP20
Utility Pouch



NUP30
Multi-Purpose Utility Pouch

► NUP Series

► Range Bag



NRB10

► Tactical Case



NTC10



Reinforced handheld grip

Hypalon Synthetic Rubber

Hard-Use Military-Spec
1050D Nylon



NTC10 Detachable Divider

► Hook-and-loop Modules



NHL02S

NHL02

NHL03

NHL04

NHL01



NHL10



NHL20



NHL30

► Holsters



NCP40



NCP30

The holsters are lightweight and durable, with convenient hook and loop fastener and modular design that enables fast mounting on MOLLE systems.

► Headbands

HB02, HB03



Strengthened sewing design provides secure fit for headlamp, a hidden silicone gripper prevents slip by sweat.

► Waterproof Dry Bags



WDB05



WDB20



Ergonomic Design



Reliable Water
Resistance



Secured Fastening
System

► Tactical Belt Pads



MB LW



MB SL

► Running Belt



BLT10

► Soft Flask



► Bandanas



► Headwear



NDH10
Combat Cap



NDH20
Boonie Hat

Model		LED	Output / Runtime					Beam Distance	Peak Beam Intensity
			Turbo	High	Mid	Low	UltraLow		
Tiny Monster Series	TM9K TAC	9 x CREE XP-L2 HD	9800 Lumens —	2000 Lumens 3h	500 Lumens 4h	130 Lumens 14h	30 Lumens 60h	280m	19800cd
	TM10K	6 x CREE XHP35 HD	10000 Lumens —	1000 Lumens *2h	300 Lumens 7h	100 Lumens 14h	3 Lumens 200h	288m	20000cd
	TM20K	19 x CREE XP-L HD	20000 Lumens —	3100 Lumens *45min	1900 Lumens 1h45min	1050 Lumens 4h15min	320 Lumens 13h	290m	22200cd
	TM39	Luminus SBT-90 GEN2	5200 Lumens *1h30min	2000 Lumens *4h	800 Lumens 10h	200 Lumens 36h	— —	1500m	562500cd
	TM39 Lite	Luminus SBT-90 GEN2	5200 Lumens *45min	2000 Lumens *2h	800 Lumens 5h	200 Lumens 20h	— —	1500m	562500cd
	TM28	4 x CREE XHP35 HI	6000 Lumens *45min	2300 Lumens *2h	1000 Lumens 4h30min	320 Lumens 11h15min	2 Lumens 1000h	655m	107200cd
	TM06S	4 x CREE XM-L2 U3	4000 Lumens 1h	1500 Lumens 4h	480 Lumens 11h15min	160 Lumens 32h	3 Lumens 560h	359m	32300cd
	P10i	Luminus SST-40-W	— —	1800 Lumens 2h30min	280 Lumens 11h	35 Lumens 50h	— —	290m	21100cd
	P10iX	4 x CREE XP-L2 V6	4000 Lumens *30min	1700 850 Lumens 2h 2h30min	300 Lumens 7h15min	50 Lumens 38h	2 Lumens 350h	158m	6250cd
	P10 V2	CREE XP-L2 V6	— —	HIGH (M1/M2/M3) 1100 Lumens 3h	MID (M3) 370 Lumens 7h	MID (M2) 200 Lumens 18h	LOW (M3) 60 Lumens 55h	201m	10150cd
Precise Series	P20i	Luminus SST-40-W	— —	1800 Lumens 2h30min	280 Lumens 11h	35 Lumens 50h	— —	343m	29500cd
	P20iX	4 x CREE XP-L2 V6	4000 Lumens *30min	1700 850 Lumens 2h 2h30min	300 Lumens 7h15min	50 Lumens 38h	2 Lumens 350h	221m	12200cd
	P20i UV	Luminus SST-40-W	— —	1800 Lumens 1h45min	250 Lumens 8h30min	35 Lumens 38h	— —	337m	28500cd
	P20 V2	CREE XP-L2 V6	— —	HIGH (M1/M2/M3) 1100 Lumens 1h	MID (M3) 370 Lumens 2h	MID (M2) 200 Lumens 3h	LOW (M3) 60 Lumens 14h	222m	12300cd
	P20UV V2	CREE XP-L2 V6	— — —	HIGH (M1/M2/M3) 1000 Lumens 2h30min	MID (M3) 330 Lumens 7h	MID (M2) 180 Lumens 16h	LOW (M3) 60 Lumens 46h	164m	6700cd
	P30i	CREE XHP35 HI	2000 Lumens *30min	1000 Lumens 1h30min	385 Lumens 4h	85 Lumens 18h	6 Lumens 100h	1000m	250000cd
	NEW P30	CREE XP-L HI V3	1000 Lumens *1h15min	400 Lumens 4h	220 Lumens 7h	70 Lumens 23h	1 Lumen 950h	618m	95500cd
	SRT7GT	CREE XP-L HI V3	1000 Lumens 1h15min	— —	— —	— —	0.1 Lumen 240h	450m	50900cd
	NPL20	CREE XP-G3 S3	460 Lumens 50min	— —	— —	— —	— —	76m	1440cd
	Smart Ring Tactical Series								

NOTE: Runtime has been measured with the first battery type stated in battery options.
 * The runtime for Turbo/High mode is the testing result before starting temperature regulation.

Waterproof	Battery Options	Dimensions			Weight	Model	
		Length	Head Diameter	Tail Diameter			
IP68	Built-in rechargeable Li-ion battery	125mm (4.92")	40mm (1.57")	28mm (1.1")	218.5g (7.71oz)	TM9K TAC	Tiny Monster Series
IP68	Built-in rechargeable Li-ion battery	110mm (4.33")	41mmx31mm (1.61"x1.22")		246.5g (8.7oz)	TM10K	
IP68	Built-in rechargeable Li-ion battery	145.5mm (5.73")	50mm (1.97")	50mmx26mm (1.97" x1.02")	422g (14.89oz)	TM20K	
IP68	NBP68HD	276mm (10.87")	90mm (3.54")	50mm (1.97")	1361g (48.01oz)	TM39	
IP68	4x18650	195mm (7.68")	90mm (3.54")	50mm (1.97")	876g (30.9oz)	TM39 Lite	
IPX8	4x IMR18650 / 4x 18650 / NBP68 HD	142mm (5.59")	57mmx57mm (2.24"x2.24") (Height/Width)	50mm (1.97")	414g (14.6oz)	TM28	
IPX8	4x18650	117mm (4.74")	50mm (1.97")	50mm (1.97")	266g (9.39oz)	TM06S	
IP68	1x21700i / 2xCR123	147mm (5.79")	25.4mm (1")	28.5mm (1.12")	84g (2.96oz)	P10i	Precise Series
IP68	1x21700i / 2xCR123	137.2mm (5.40")	25.4mm (1")	28.5mm (1.12")	79.5g (2.80oz)	P10iX	
IP68	1x18650 / 2xCR123	148.3mm (5.84")	25.4mm (1")	26mm (1.02")	95g (3.35oz)	P10 V2	
IP68	1x21700i / 2xCR123	142.6mm (5.61")	31.8mm (1.25")	28.5mm (1.12")	113.5g (4oz)	P20i	
IP68	1x21700i / 2xCR123	141.5mm (5.57")	25.4mm (1")	28.5mm (1.12")	116g (4.09oz)	P20iX	
IP68	1x21700i / 2xCR123	150.5mm (5.93")	31.8mm (1.25")	28.5mm (1.12")	124g (4.37oz)	P20i UV	
IP68	1x18650 / 2xCR123	149.4mm (5.88")	31.8mm (1.25")	26mm (1.02")	135g (4.76oz)	P20 V2	
IP68	1x18650 / 2xCR123	151.2mm (5.95")	31.8mm (1.25")	26mm (1.02")	133.5g (4.71oz)	P20UV V2	
IP68	1x21700i / 2xCR123	177.5mm (6.99")	65mm (2.56")	28.5mm (1.12")	255.5g (9.01oz)	P30i	
IP68	1x21700 / 1x18650 / 2xCR123	155.5mm (6.12")	50mm (1.97")	27.2mm (1.07")	158.5g (5.59oz)	NEW P30	
IPX8	1x18650 / 2xCR123	158mm (6.22")	40mm (1.57")	25.4mm (1")	173g (6.1oz)	SRT7GT	Smart Ring Tactical Series
IP67	1xCR123	64.5mmx36mmx33mm (2.54"x1.42"x1.30")			71.5g (2.52oz)	NPL20	NPL Series

MODEL		LED	OUTPUT / RUNTIME					BEAM DISTANCE	PEAK BEAM INTENSITY
			TURBO	HIGH	MID	LOW	ULTRALOW		
NPL Series	NPL30	4 x CREE XP-G3	1,200 Lumens	—	—	—	—	113m	3300cd
			1h45min	—	—	—	—		
Chameleon Series	CU6	CREE XP-G2 R5	440 Lumens	280 Lumens	160 Lumens	25 Lumens	1 Lumen	190m	9000cd
			1h45min	3h30min	7h	43h	400h		
	CI7	4 x CREE XP-G3 S3	2500 Lumens	1100 Lumens	320 Lumens	90 Lumens	8 Lumens	279m	19500cd
			*30min	1h45min	4h15min	20h	130h		
		4 x Luminus SST-10-IR	—	7000mW	3000mW	1000mW	—	—	—
			—	2h	3h15min	9h	—		
R Series	R40 V2	CREE XP-L HI V3	1000 Lumens	420 Lumens	200 Lumens	50 Lumens	1 Lumen	520m	67700cd
			2h15min	5h	11h30min	38h	1200h		
Multitask Hybrid Series	MH10 V2	CREE XP-L2 V6	—	1200 Lumens	300 Lumens	55 Lumens	1 Lumen	202m	10200cd
			—	3h45min	8h	46h	1500h		
	MH10S	Luminus SST-40-W	1800 Lumens	1050 Lumens	300 Lumens	50 Lumens	1 Lumen	294m	21600cd
			*45min	3h15min	7h15min	45h	1500h		
	MH12 V2	CREE XP-L2 V6	—	1200 Lumens	300 Lumens	55 Lumens	1 Lumen	202m	10200cd
			—	3h45min	8h	46h	1500h		
	MH12S	Luminus SST-40-W	1800 Lumens	1050 Lumens	300 Lumens	50 Lumens	1 Lumen	294m	21600cd
			*45min	3h15min	7h15min	45h	1500h		
	MH25S	Luminus SST-40-W	1800 Lumens	1050 Lumens	300 Lumens	50 Lumens	1 Lumen	504m	63500cd
			*45min	3h	8h30min	48h	1500h		
	MH23	CREE XHP35 HD	1800 Lumens	760 Lumens	260 Lumens	55 Lumens	1 Lumen	294m	21600cd
			*30min	1h45min	4h45min	19h	300h		
	MH27	CREE XP-L HI V3	1000 Lumens	250 Lumens	55 Lumens	1 Lumen	—	462m	53500cd
			1h	6h15min	28h	708h	—		
	MH27 UV	CREE XP-L HI V3	1000 Lumens	250 Lumens	55 Lumens	1 Lumen	—	462m	53500cd
			1h	6h15min	28h	708h	—		
Multi-Task Series	MT21C	CREE XP-L HD V6	1000 Lumens	400 Lumens	190 Lumens	50 Lumens	1 Lumen	184m	8500cd
			*1h	3h45min	7h30min	25h	700h		
	MT06MD	Nichia 219B	—	180 Lumens	45 Lumens	4 Lumens	—	58m	860cd
			—	45min	5h15min	35h	—		
	MT1A	CREE XP-G2 R5	180 Lumens	55 Lumens	22 Lumens	5 Lumens	—	115m	3350cd
			1h30min	5h30min	18h	60h	—		
	MT10C	CREE XM-L2 U2	920 Lumens	500 Lumens	180 Lumens	70 Lumens	1 Lumen	190m	9000cd
			30min	45min	1h45min	5h	120h		
	MT2A	CREE XP-G2 R5	345 Lumens	138 Lumens	55 Lumens	17 Lumens	—	152m	5800cd
			2h15min	5h	12h	50h	—		
Explorer Series	E4K	4 x CREE XP-L2 V6	4400 Lumens	1050 Lumens	320 Lumens	50 Lumens	2 Lumens	211m	11100cd
			*30min	3h15min	7h30min	45h	700h		
	EA41	CREE XM-L2 U2	1020 Lumens	580 Lumens	160 Lumens	50 Lumens	1 Lumen	335m	28276cd
			1h45min	2h45min	12h	30h	400h		

NOTE: Runtime has been measured with the first battery type stated in battery options.
 * The runtime for Turbo/High mode is the testing result before starting temperature regulation.

WATERPROOF	BATTERY OPTIONS	DIMENSIONS			WEIGHT	MODEL	
		LENGTH	HEAD DIAMETER	TAIL DIAMETER			
IP66	2×CR123	81.47mm×37mm×35.6mm (3.21"×1.46"×1.40")			97g (3.42oz)	NPL30	NPL Series
IPX8	1×18650 / 2×CR123	143mm (5.63")	40mm (1.57")	25.4mm (1")	138g (4.87oz)	CU6	Chameleon Series
IP68	1×18650 / 2×CR123	148.2mm (5.83")	40mm (1.57")	26mm (1.02")	158g (5.57oz)	CI7	
IP68	NL2150DW	159mm (6.26")	40mm (1.57")	38.6mm (1.52")	211g (7.44oz)	R40 V2	R Series
IP68	1×21700 / 1×18650 / 2×CR123	147mm (5.79")	25.4mm (1")	27.2mm (1.07")	77.5g (2.73oz)	MH10 V2	Multitask Hybrid Series
IP68	1×21700 / 1×18650 / 2×CR123	131.3mm (5.17")	25.4mm (1")	27.2mm (1.07")	69.7g (2.46oz)	MH10S	
IP68	1×21700 / 1×18650 / 2×CR123	158mm (6.22")	25.4mm (1")	27.2mm (1.07")	84.5g (2.98oz)	MH12 V2	
IP68	1×21700 / 1×18650 / 2×CR123	141mm (5.55")	25.4mm (1")	27.2mm (1.07")	75.5g (2.66oz)	MH12S	
IP68	1×21700 / 1×18650 / 2×CR123	156.9mm (6.18")	40mm (1.57")	27.2mm (1.07")	130.7g (4.61oz)	MH25S	
IPX8	1×IMR18650 / 1×18650 / 2×CR123	111.3mm (4.38")	31.8mm (1.25")	25.4mm (1")	96.2g (3.39oz)	MH23	
IPX8	1×18650 / 2×CR123	154mm (6.06")	40mm (1.57")	25.4mm (1")	170g (6oz)	MH27	
IPX8	1×18650 / 2×CR123	154mm (6.06")	40mm (1.57")	25.4mm (1")	170g (6oz)	MH27 UV	
IP68	1×21700 / 1×18650 / 2×CR123	157.2mm (6.19")	40mm (1.57")	27.2mm (1.07")	137g (4.83oz)	MH25 V2	Multi-Task Series
IPX8	1×18650 / 2×CR123	131mm(5.15")	25.4mm (1")	25.4mm (1")	103.5g (2.55oz)	MT21C	
IPX8	2×AAA	128mm (5.04")	14mm (0.55")	14mm (0.55")	22g (0.78oz)	MT06MD	
IPX8	1×AA	105mm (4.13")	22.56mm (0.89")	21.5mm (0.85")	55g (1.94oz)	MT1A	
IPX8	1×IMR18350 / 1×CR123	91.2mm (3.59")	25.4mm (1")	25.4mm (1")	57g (2.01oz)	MT10C	
IPX8	2×AA	155mm (6.1")	22.56mm (0.89")	21.5mm (0.85")	67g (2.36oz)	MT2A	Explorer Series
IP68	1×21700 / 2×CR123	117.56mm (4.63")	28.6mm (1.13")	28.1mm (1.11")	80g (2.82oz)	E4K	
IPX8	4×AA	117mm (4.6")	40mm (1.57")	41.8mm (1.65")	151g (5.33oz)	EA41	

MODEL		LED	OUTPUT / RUNTIME					BEAM DISTANCE	PEAK BEAM INTENSITY
			TURBO	HIGH	MID	LOW	ULTRALOW		
Explorer Series	EC20	CREE XML2 U2	—	960 Lumens	210 Lumens	50 Lumens	1 Lumen	222m	12450cd
			—	1h15min	6h	28h	520h		
	EC23	CREE XHP35 HD E2	1800 Lumens	980 Lumens	300 Lumens	55 Lumens	1 Lumen	255m	16200cd
			*30min	*1h30min	4h45min	22h	330h		
T Series	Thumb	2 x High Performance LEDs	—	85 Lumens	30 Lumens	2 Lumens	—	26m	170cd
			—	45min	2h15min	22h	—		
	Thumb LEO	2 x High Performance LEDs	45 Lumens	—	—	—	—	24m	150cd
			2h	—	—	—	—		
	TINI2/ TINI2 SS/ TINI2 Ti	2 x OSRAM P8	500 Lumens	200 Lumens	65 Lumens	15 Lumens	1 Lumen	89m	2000cd
			*15min	45min	2h30min	8h	60h		
	T4K	4 x CREE XP-L2 V6	4000 Lumens	200 Lumens	65 Lumens	15 Lumens	1 Lumen	209m	10900cd
			—	2h45min	7h	21h	67h		
	TUP	CREE XP-L HD V6	1000 Lumens	200 Lumens	65 Lumens	15 Lumens	1 Lumen	180m	8130cd
			*15min	3h	9h45min	19h	70h		
	TUBE V2.0	High Performance LED	—	55 Lumens	—	1 Lumen	—	25m	156cd
			—	1h15min	—	58h	—		
	TUBE UV	High Performance LED	500mW	—	—	—	—	—	—
			1h	—	—	—	—		
	TIKI/TIKI LE/ TIKI GITD/ TIKI GITD BLUE	OSRAM P8	—	300 Lumens	60 Lumens	15 Lumens	1 Lumen	71m	1260cd
			—	30min	1h	4h	40h		
	TIKI UV	Luminus SST-10-UV	UV		AUX WHITE		—	—	—
			1,000mW	180mW	70 Lumens	35 Lumens			
			1h	2h	30min	1h			
	TIP SE	2 x OSRAM P8	700 Lumens	180 Lumens	30 Lumens	1 Lumen	—	90m	2100cd
			*15min	1h30min	8h	50h	—		
	TIP CRI	Nichia 219B, CRI≥90	240 Lumens	95 Lumens	22 Lumens	1 Lumen	—	56m	810cd
			*30min	1h30min	6h30min	46h	—		
	TIP2	2 x CREE XP-G3 S3	720 Lumens	200 Lumens	30 Lumens	1 Lumen	—	93m	2160cd
			*15min	1h15min	8h	55h	—		
NU Series	NU05	4 x High Performance LEDs	White Constant-on	White Flashing	Red Slow Flashing	Red Quick Flashing	—	—	—
			35 Lumens	35 Lumens	4 Lumens	4 Lumens	—		
			1h	2h15min	9h	9h	—		
	NU05 LE	4 x High Performance LEDs	Red Flashing	Green Flashing	Blue Flashing	White Flashing	Red/Blue Police Warning Flashing	—	—
			12 Lumens	17 Lumens	2 Lumens	20 Lumens	—		
			15h	15h	15h	18h	18h		
	NU05 MI	4 x High Performance LEDs	IR Flashing	IR Beam	Green Flashing	Green Beam	—	—	—
			—	—	5 Lumens	5 Lumens	—		
			18h	3h15min	20h	6h	—		

NOTE: Runtime has been measured with the first battery type stated in battery options.
 * The runtime for Turbo/High mode is the testing result before starting temperature regulation.

WATERPROOF	BATTERY OPTIONS	DIMENSIONS			WEIGHT	MODEL	
		LENGTH	HEAD DIAMETER	TAIL DIAMETER			
IPX8	1x18650 / 2xCR123	128mm (5")	25.4mm (1")	25.4mm (1")	76g (2.68oz)	EC20	Explorer Series
IPX8	1x18650 / 1x IMR18650 / 2xCR123	128.7mm (5.07")	25.4mm (1")	25.4mm (1")	78g (2.75oz)	EC23	
IP65	Built-in rechargeable Li-ion battery	74mm (2.91") (Length)	24mm (0.94") (Width)	15.8mm (0.62") (Depth)	25g (0.88oz)	Thumb	T Series
IP65	Built-in rechargeable Li-ion battery	74mm (2.91") (Length)	24mm (0.94") (Width)	15.8mm (0.62") (Depth)	25g (0.88oz)	Thumb LEO	
IP54	Built-in rechargeable Li-ion battery	46.6mmx25mmx12.5mm (1.83" x0.98" x0.49")			TINI2: 18.8g (0.66oz) TINI2 SS: 26g (0.92oz) TINI2 Ti: 21.5g (0.76oz)	TINI2/ TINI2 SS/ TINI2 Ti	
IP54	Built-in rechargeable Li-ion battery	82.3mmx30mmx29.2mm (3.24" x1.18" x1.15")			77g (2.72oz)	T4K	
IP54	Built-in rechargeable Li-ion battery	70.3mmx29.5mmx26.2mm (2.77" x1.16" x1.03")			53.2g(1.88oz)	TUP	
IP65	Built-in rechargeable Li-ion battery	56.5mm (2.22") (Length)	21mm (0.83") (Width)	8mm (0.31") (Depth)	9.6g (0.34oz)	TUBE V2.0	
IP65	Built-in rechargeable Li-ion battery	56.5mm (2.22") (Length)	21mm (0.83") (Width)	8mm (0.31") (Depth)	9g (0.32oz)	TUBE UV	
IP66	Built-in rechargeable Li-ion battery	55mm (2.17")	14.7mm (0.58")	—	TIKI/TIKI GITD/ TIKI GITD BLUE: 12g (0.42oz) TIKI LE: 10.5g (0.37oz)	TIKI/TIKI LE/ TIKI GITD/ TIKI GITD BLUE	
IP66	Built-in rechargeable Li-ion battery	55mm (2.17")	14.7mm (0.58")	—	10.5g (0.37oz)	TIKI UV	
IP54	Built-in rechargeable Li-ion battery	60mmx24.5mmx13.8mm (2.36"x0.96"x0.54")			26g (0.92oz)	TIP SE	
IP54	Built-in rechargeable Li-ion battery	60.8mm (2.39") (Length)	24.5mm (0.96") (Width)	13.8mm (0.54") (Depth)	23.5g (0.83oz)	TIP CRI	
IP67	Built-in rechargeable Li-ion battery	62.6mm (2.46") (Length)	26.9mm (1.06") (Width)	13.4mm (0.53") (Depth)	38.3g (1.35oz)	TIP2	
IP66	Built-in rechargeable Li-ion battery	30.3mmx29.5mmx16.3mm (1.19"x1.16"x0.64")			10.4g (0.37oz)	NU05	NU Series
IP66	Built-in rechargeable Li-ion battery	30.3mmx29.5mmx16.3mm (1.19"x1.16"x0.64")			10.5g (0.37oz)	NU05 LE	
IP66	Built-in rechargeable Li-ion battery	30.3mmx29.5mmx16.3mm (1.19"x1.16"x0.64")			10.5g (0.37oz)	NU05 MI	

MODEL		LED	OUTPUT / RUNTIME					BEAM DISTANCE	PEAK BEAM INTENSITY
			TURBO	HIGH	MID	LOW	ULTRALOW		
NU Series	NU06 LE	4 x High Performance LEDs	Red Constant-on	Green Constant-on	Blue Constant-on	White Constant-on	—	—	—
			3 Lumens	8 Lumens	2 Lumens	15 Lumens	—		
			9h	9h	5h	5h45min	—		
			Red Flashing	Green Flashing	Blue Flashing	White Flashing	Red/Blue Police Warnina Flashina		
			3 Lumens	8 Lumens	2 Lumens	15 Lumens	—		
			75h	75h	48h	54h	56h		
	NU07 LE	5 x High Performance LEDs	Red Constant-on	Green Constant-on	Yellow Constant-on	White Constant-on	Blue Constant-on	—	—
			3 Lumens	8 Lumens	9 Lumens	15 Lumens	2 Lumens		
			10h	11h	11h	7h	6h		
			Red Flashing	Green Flashing	Yellow Flashing	White Flashing	Blue Flashing		
			3 Lumens	8 Lumens	9 Lumens	15 Lumens	2 Lumens		
			50h	50h	50h	40h	40h		
	NU10	5 x High Performance LEDs	—	160 Lumens	35 Lumens	1 Lumen	—	35m	310cd
			—	7h	8h45min	150h	—		
	NU17	CREE XP-G2 S3	—	130 Lumens	28 Lumens	1 Lumen	—	43m	460cd
			—	6h	10h	150h	—		
	NU20	CREE XP-G2 S3	360 Lumens	220 Lumens	40 Lumens	1 Lumen	—	80m	1600cd
			*30min	6h	7h45min	100h	—		
	NU25	CREE XP-G2 S3	360 Lumens	190 Lumens	38 Lumens	1 Lumen	—	81m	1650cd
			*30min	5h	8h	160h	—		
	NU32	CREE XP-G3 S3	550 Lumens	190 Lumens	33 Lumens	1 Lumen	—	125m	3900cd
			*1h	17h	50h	330h	—		
	NU35	CREE XP-G3 S3	Built-in Li-ion Battery	460 Lumens	210 Lumens	38 Lumens	1 Lumen	48m	580cd
				*15min	4h	7h45min	170h		
			3 x AAA Batteries	460 Lumens	210 Lumens	38 Lumens	1 Lumen		
				*15min	6h	9h	170h		
Headlamp Series	HC33	CREE XHP35 HD	1800 Lumens	780 Lumens	240 Lumens	70 Lumens	1 Lumen	187m	8750cd
			*30min	*1h45min	5h45min	16h30min	330h		
	HC35	4 x CREE XP-G3 S3	2700 Lumens	800 Lumens	270 Lumens	40 Lumens	1 Lumen	134m	4500cd
			*45min	3h	8h15min	52h	1200h		
	HC60 V2/ HC60W V2/ HC60M V2	OSRAM P9	1200 Lumens	450 Lumens	250 Lumens	40 Lumens	1 Lumen	130m	4240cd
			*45min	2h15min	6h30min	26h	680h		
	HC65 V2/ HC65M V2	Luminus SST-40-W	1750 Lumens	900 Lumens	250 Lumens	50 Lumens	1 Lumen	165m	7000cd
			*30min	2h15min	6h	28h	800h		
	HA23	CREE XP-G2 S3	—	250 Lumens	65 Lumens	2 Lumens	—	56m	800cd
			—	3h30min	17h	130h	—		
	HA23-Ex	CREE XP-G	—	100 Lumens	40 Lumens	2 Lumens	—	37m	350cd
			—	4h	24h	130h	—		

NOTE: Runtime has been measured with the first battery type stated in battery options.
 * The runtime for Turbo/High mode is the testing result before starting temperature regulation.

WATERPROOF	BATTERY OPTIONS	DIMENSIONS			WEIGHT	MODEL
		LENGTH	HEAD DIAMETER	TAIL DIAMETER		
IP66	Built-in rechargeable Li-ion battery	29.5mm×29.5mm×25.4mm (1.16"× 1.16"× 1")			15.8g (0.56oz)	NU06 LE
IP66	Built-in rechargeable Li-ion battery	61.8mm×28.9mm×21.7mm (2.43"×1.14"×0.85")			24.5g (0.86oz)	NU07 LE
IP66	Built-in rechargeable Li-ion battery	60.5mm (2.38") (Length)	35mm (1.38") (Width)	29mm (1.15") (Depth)	65g (2.29oz)	NU10
IP66	Built-in rechargeable Li-ion battery	53.2mm (2.09") (Length)	30.2mm (1.19") (Width)	27.4mm (1.08") (Depth)	33.5g (1.18oz)	NU17
IPX7	Built-in rechargeable Li-ion battery	55.5mm (2.18") (Length)	33mm (1.29") (Width)	21mm (0.82") (Depth)	31g (1.09oz)	NU20
IP66	Built-in rechargeable Li-ion battery	55.5mm (2.19") (Length)	34.6mm (1.36") (Width)	23.2mm (0.91") (Depth)	28g (0.99oz)	NU25
IP67	Built-in rechargeable Li-ion battery	63mm (2.48") (Length)	43.5mm (1.71") (Width)	31.5mm (1.24") (Depth)	76.4g (2.69oz)	NU32
IP66	Built-in rechargeable Li-ion battery + 3 x AAA	61.3mm×48.5mm×45.6mm (2.41"×1.91"×1.8") (Bracket Included)			59g (2.08oz)	NU35
IP68	1×18650 / 1×IMR18650 / 2×CR123	105.3mm (4.15")	25.5mm×24.2mm (1"×0.95")	23.8mm (0.94")	51.2g (1.81oz)	HC33
IP68	1×21700 / 1×18650 / 2×CR123	128.2mm (5.05")	28.85mm×31.77mm (1.14"×1.25")	26mm (1.02")	100g (3.53oz)	HC35
IPX7	1×18650 / 2×CR123	HC60 V2/HC60W V2: 84mm×35.8mm×53.5mm (3.31"×1.41"×2.11") HC60M V2:84mm×50mm×46mm (3.31"×1.97"×1.81")			HC60 V2/HC60W V2: 70g (2.47oz) HC60M V2: 82g (2.89oz)	HC60 V2/HC60W V2/HC60M V2
IP68	1×18650 / 2×CR123	HC65 V2: 90.8mm × 34.75mm × 26.95mm (3.57" × 1.37" × 1.06") HC65M V2: 90.8mm × 50mm × 45.8mm (3.57" × 1.97" × 1.80")			HC65 V2: 65.5g (2.31oz) HC65M V2: 90a (3.17oz)	HC65 V2/HC65M V2
IP67	2×AA	70.8mm×42.3mm×38mm (2.79"×1.67"×1.5")			42.5g (1.5oz)	HA23
IP67	2×AA	70.8mm×42.3mm×38mm (2.79"×1.67"×1.5")			42.5g (1.5oz)	HA23-Ex

Model		LED	Output / Runtime					Beam Distance	Peak Beam Intensity
			Turbo	High	Mid	Low	UltraLow		
Headlamp Series	HU60	4 x CREE XP-G3 S3	100% Spotlight					162m	6570cd
			1600 Lumens	480 Lumens	200 Lumens	50 Lumens	5 Lumens		
			1h30min	5h	9h30min	23h	45h		
		CREE XHP35 HD E2	100% Floodlight					37m	348cd
			1200 Lumens	480 Lumens	200 Lumens	50 Lumens	5 Lumens		
1h	4h30min		7h30min	21h	45h				
UT Series	UT32	CREE XP-L2 V6 (5700K)	1100 Lumens	410 Lumens	220 Lumens	60 Lumens	—	80m	1600cd
			8h	12h	23h	42h		117m	3460cd
		CREE XP-L V6 (3000K)	920 Lumens	370 Lumens	190 Lumens	50 Lumens			
			8h	12h	23h	42h			
	UT27	2 x CREE XP-G3 S3	TURBO	SPOTLIGHT		FLOODLIGHT		128m	4120cd
			520 Lumens	400 Lumens	100 Lumens	200 Lumens	55 Lumens		
—			6h	10h	8h	13h			
Lantern Series	LA10	CREE XP-G2 S3	—	135 Lumens	40 Lumens	10 Lumens	—	10m (Beam Diameter)	—
			—	1h30min	6h	23h	—		
	LR30	6 x High Performance LEDs	—	205 Lumens	85 Lumens	12 Lumens	—	40m (Beam Diameter)	103cd
			—	*3h30min	8h30min	62h	—		
	LR60	9 x High Performance LEDs	—	280 Lumens	75 Lumens	6 Lumens	—	28m (Beam Diameter)	54cd
			—	16h	32h	150h	—		
	LR12	CREE XP-L HD V6	1000 Lumens	230 Lumens	60 Lumens	1 Lumen	—	166m	6900cd
			*1h	6h	24h	900h	—		
Explosion-proof Series	EF1	CREE XM-L2 U3	—	830 Lumens	320 Lumens	4 Lumens	—	270m	18300cd
			—	1h45min	3h	150h	—		
Bike Light Series	BR35	2 x CREE XM-L2 U2	800 Lumens	465 Lumens	285 Lumens	150 Lumens	Short Range Beam	176m	7750cd
			*2h	5h45min	8h30min	17h	Long Range Beam		
			1000 Lumens	550 Lumens	330 Lumens	180 Lumens			
			*2h	5h45min	8h30min	17h	Dual Range Beam		
			1800 Lumens	1015 Lumens	615 Lumens	300 Lumens			
	BR25	Luminus SST-40-W	1400 Lumens	430 Lumens	170 Lumens	28 Lumens	—	163m	6700cd
			1h45min	2h30min	9h	47h	—		
GEM Series	GEM8	CREE XP-L HI V3	500 Lumens	—	—	—	1 Lumen	39m	380cd
			*1h	—	—	—	500h		
	GEM10UV	Ultraviolet 3000mW, 365nm	Ultraviolet (TURBO)	—	—	—	Ultraviolet (ULTRALOW)	—	—
			3000mW	—	—	—	5mW		
*4h15min			—	—	—	500h			
HM Series	HM01	Luminus SST-20-W	—	320 Lumens	—	35 Lumens	—	74m	1390cd
			—	3h	—	15h	—		
CU Series	CU10	High CRI COB	—	220 Lumens	—	50 Lumens	—	20m	104cd
			—	14h	—	30h	—		

NOTE: Runtime has been measured with the first battery type stated in battery options.
 * The runtime for Turbo/High mode is the testing result before starting temperature regulation.

WATERPROOF	BATTERY OPTIONS	DIMENSIONS			WEIGHT	MODEL	
		LENGTH	HEAD DIAMETER	TAIL DIAMETER			
IP67	USB Power Source	47.6mm×43.2mm×42.1mm (1.87"×1.7"×1.66")			117.5g (4.14oz)	HU60	Headlamp Series
IP68	1×18650 / 2×CR123	95.9mm (3.78")	27.6mm×26.8mm (1.09"×1.06")	23.8mm (0.94")	48g (1.69oz)	UT32	UT Series
IP66	1×HLB1300 / 3×AAA	55.4mm×42.5mm×32mm (2.18"×1.67"×1.26")			74g (2.61oz)	UT27	UT Series
IPX6	1×AA	78.5mm (3.09")	22.6mm (0.89")	—	42.7g (1.51oz)	LA10	Lantern Series
IPX6	1×18650 / 2×CR123	92mm×43.5mm×31.6mm (3.62"×1.72"×1.24")			62g (2.18oz)	LR30	
IP66	2 ×21700 / 2 ×18650 / 4 × CR123	129.3mm×60.7mm×31.2mm (5.09"×2.39"×1.23")			136g (4.8oz)	LR60	
IPX8	1×18650 / 2×CR123	106.2mm (4.18")	26.9mm (1.06")	26.9mm (1.06")	78.5g (2.77oz)	LR12	
IP54	1×18650	152.2mm (6")	40mm (1.57")	32.1mm (1.26")	250g (8.82oz)	EF1	Explosion-proof Series
IPX7	Built-in rechargeable Li-ion battery	109.3mm×48.9mm×40.9mm (4.3"×1.93"×1.61")			234.5g (8.27oz)	BR35	Bike Light Series
IP68	1×21700 / 1×18650 / 2×CR123	148.6mm (5.85")	30mm (1.18")	27.2mm (1.07")	76g (2.68oz)	BR25	
IPX8	1×18650 / 2×CR123	139mm (5.47")	9mm (0.35")	21.5mm (0.85")	57.7g (2.04oz)	GEM8	GEM Series
IPX8	1×18650 / 2×CR123	135mm (5.31")	16mm (0.63")	21.5mm (0.85")	66.5g (2.35oz)	GEM10UV	
IP68	1×CR123	53.8mm×39.7mm×20.8mm (Folded)			40.5g (1.43oz)	HM01	HM Series
IP67	USB Power Source	48.3mm×33.2mm×30.6mm (1.9"×1.31"×1.2")			71g (2.5oz)	CU10	CU Series

MODEL		DIMENSIONS	WEIGHT	BATTERY SLOTS / OUTPUT PORTS
SC Series	SC2	155mmx80mmx44mm (6.1"x3.16"x1.73")	263g (9.28oz)	2
	SC4	165mmx110mmx45mm (6.5"x 4.33"x 1.77")	385g (13.59oz)	4
D Series	D2	143mmx74mmx36mm (5.63"x2.91"x1.42")	168g (5.92oz)	2
	D4	143mmx99mmx36mm (5.63"x3.9"x1.42")	239g (8.43oz)	4
U Series	UM2	152mmx73mmx40mm (5.98"x2.87"x1.57")	148.3g(5.23oz)	2
	UM4	159mmx107mmx41mm (6.26"x4.21"x1.61")	232.8g(8.21oz)	4
	UMS2	152mmx73mmx40mm (5.98"x2.87"x1.57")	157.7g(5.56oz)	2
	UMS4	159mmx107mmx41mm (6.26"x4.21"x1.61")	255.4g(9.01oz)	4
	UI1	122.5mmx29.2mmx32mm (4.82"x1.15"x1.26")	40.5g (1.43oz)	1
	UI2	125.5mmx59.5mmx32.1mm (4.94"x2.34"x1.26")	79.5g (2.8oz)	2
i Series	NEW i2	132mmx70mmx35mm (5.2"x2.76"x1.38")	126g(4.44oz)	2
	NEW i4	140mmx94.8mmx37mm (5.51"x3.73"x1.45")	202g(7.12oz)	4
	i8	117mmx101mmx134.5mm (4.61"x3.98"x5.30")	488.2g(17.22oz)	8
F Series	F21i	Diameter: 27.4mm (1.08") Length: 112.5mm (4.43")	22g (0.78oz)	1
	F4	113.4mmx86.1mmx27mm (4.46"x3.39"x1.06")	122.5g (4.32oz)	4
Q Series	Q4	125.4mmx95.6mmx36.2mm (4.94"x3.76"x1.43")	150.3g(5.3oz)	4
	Q6	132.5mmx137.5mmx36.2mm (5.22"x5.41"x1.43")	229g(8.08oz)	6
V Series	V2	67mmx65mmx125mm (2.36"x2.29"x4.41")	197.6g (6.94oz)	2
	VC110	78.5mmx24.5mmx23mm (3.09"x0.96"x0.91")	44.5g (1.57oz)	1
LC Series	LC10	245mmx24.5mmx18.5mm (9.65"x0.96"x0.73")	27.8g (0.98oz)	1
USB Adapters	UA42Q	82mmx65mmx28.4mm (3.23"x2.56"x1.19") (Plug Included)	116g (4.09oz)	2
	UA55	97.3mmx68.4mmx28.3mm (3.83" x2.69" x1.11")	178.5g (6.3oz)	5
	UA66Q	109.2mmx80.4mmx28.7mm (4.3" x3.17" x1.13")	222g (7.83oz)	6

MODEL		DIMENSIONS	WEIGHT	BATTERY SLOTS / OUTPUT PORTS
Camera Chargers	USN1	85mmx50mmx26.5mm (3.35"x1.97"x1.04")	58.9g(2.08oz)	2
	USN2	80mmx50mmx25mm (3.15"x1.97"x0.98")	54.2g (1.91oz)	2
	USN3 Pro	125mmx70mmx29mm (4.92"x2.76"x1.14")	99.3g(3.5oz)	2
	USN4 Pro	125mmx70mmx29mm (4.92"x2.76"x1.14")	95g (3.35oz)	2
	UCN1	85mmx50mmx25mm (3.34"x1.96"x0.98")	55.7g(1.96oz)	2
	UCN2 Pro	125mmx70mmx29mm (4.92"x2.76"x1.14")	93.5g(3.3oz)	2
	UCN3	85mmx50mmx25.5mm (3.35"x1.97"x1")	58.7g(2.07oz)	2
	UCN4 PRO	125mmx70mmx29mm (4.92" x2.76" x1.14")	93.5g (3.3oz)	2
	UCN5	85mmx50mmx26mm (3.35" x1.97" x1.02")	52.5g (1.85oz)	2
	UNK1	85mmx50mmx25mm (3.34"x1.96"x0.98")	59g(2.09oz)	2
	UNK2	85mmx50mmx25.5mm (3.35"x1.97"x1")	66g (2.33oz)	2
	FX1	85mmx50mmx25.5mm (3.35"x1.97"x1")	58g (2.05oz)	2
	FX2 Pro	125mmx70mmx29mm (4.92"x2.76"x1.14")	101.5g(3.58oz)	2
	FX3	82mmx70mmx27.5mm (3.23"x2.76"x1.08")	70g (2.47oz)	2
	UL109	85mmx50mmx25.5mm (3.35"x1.97"x1")	57.7g (2.04oz)	2
	ULM10 Pro	125mmx70mmx29mm (4.92"x2.76"x1.14")	97.5g (3.44oz)	2
	ULSL	85mmx50mmx29.5mm (3.34"x1.96"x1.16")	55.8g(1.96oz)	1
	UHX1 PRO	125mmx70mmx29mm (4.92"x2.76"x1.14")	116g(4.09oz)	2
UGP Series	UGP5	97mmx50mmx26.5mm (3.82"x1.97"x1.04")	67.5g (2.38oz)	2

All images, text and statements specified herein this catalogue are for reference purpose only. Should any discrepancy occur between this catalogue and information specified on www.nitecore.com, information on our official website shall prevail. Sysmax Innovations Co., Ltd. reserves the rights to interpret and amend the content of this document at any time without prior notice.